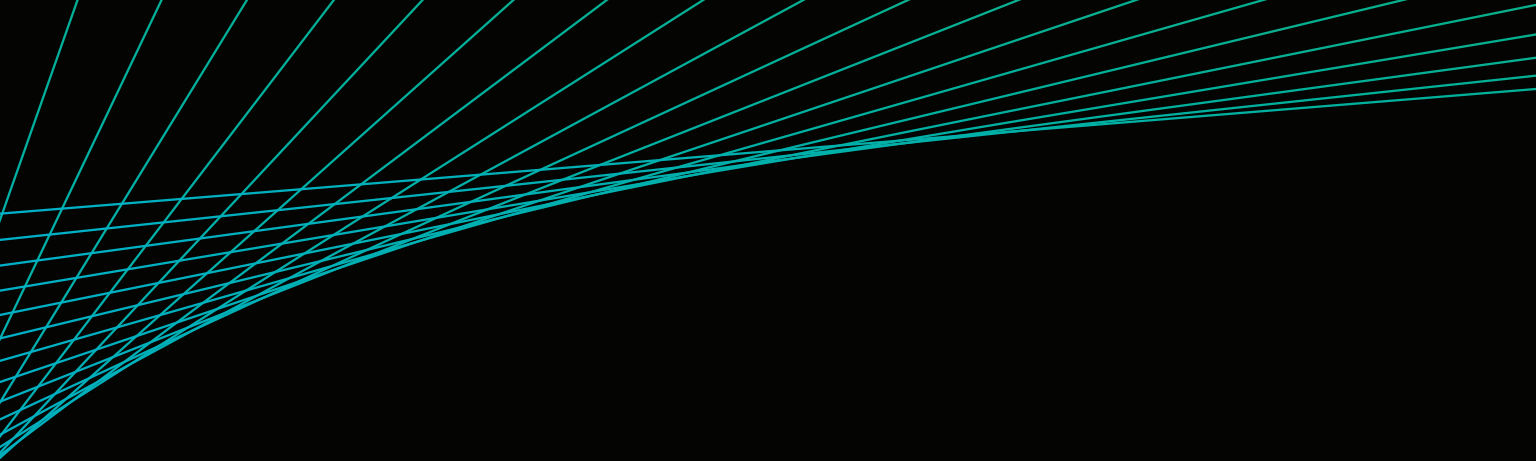


# The Hedge Fund Solution Suite


For growing your fund at any stage

**Bloomberg**



## **Contents**

- 02** Full coverage of the hedge fund ecosystem
- 04** An improved workflow starts here: agility & efficiency all connected
- 05** News
- 06** Research Management Solutions: create, consume & collaborate
- 08** Portfolio & risk management: tools for deeper insight
- 10** Execution management: everything on a single platform
- 11** Order management: a simplified data flow
- 12** Post execution & compliance: a better way to share information
- 14** Liquidity & data management: an efficient data platform
- 14** Connectivity & integration: what you need, where you need it
- 15** Marketing solutions: connect with greater insight
- 17** Community tools: collaborate freely
- 18** Illustration of Bloomberg's recommended front-to-back workflow

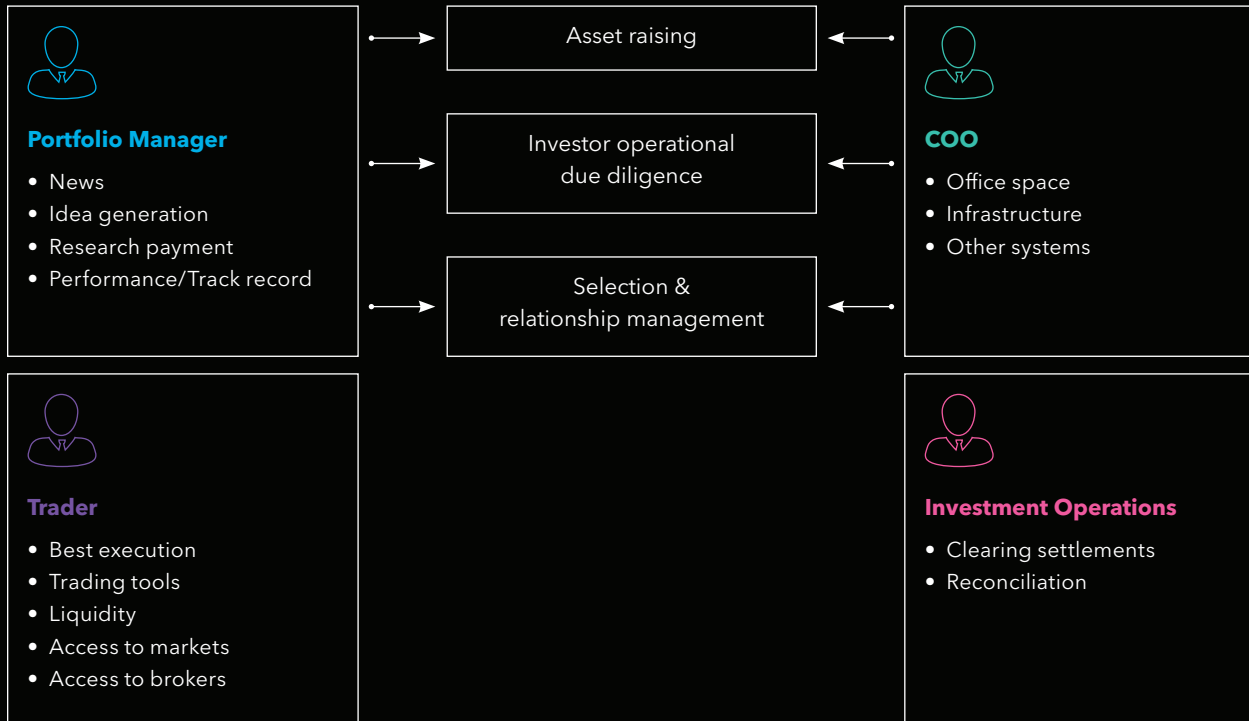


# **Unparalleled technology meets market-leading expertise.**

Wherever your hedge fund is in its life cycle, Bloomberg has the data, solutions and industry network to take you to the next level. Our Hedge Fund Solution Suite lays out a framework of practical solutions that can help you make smarter, more informed financial technology decisions.

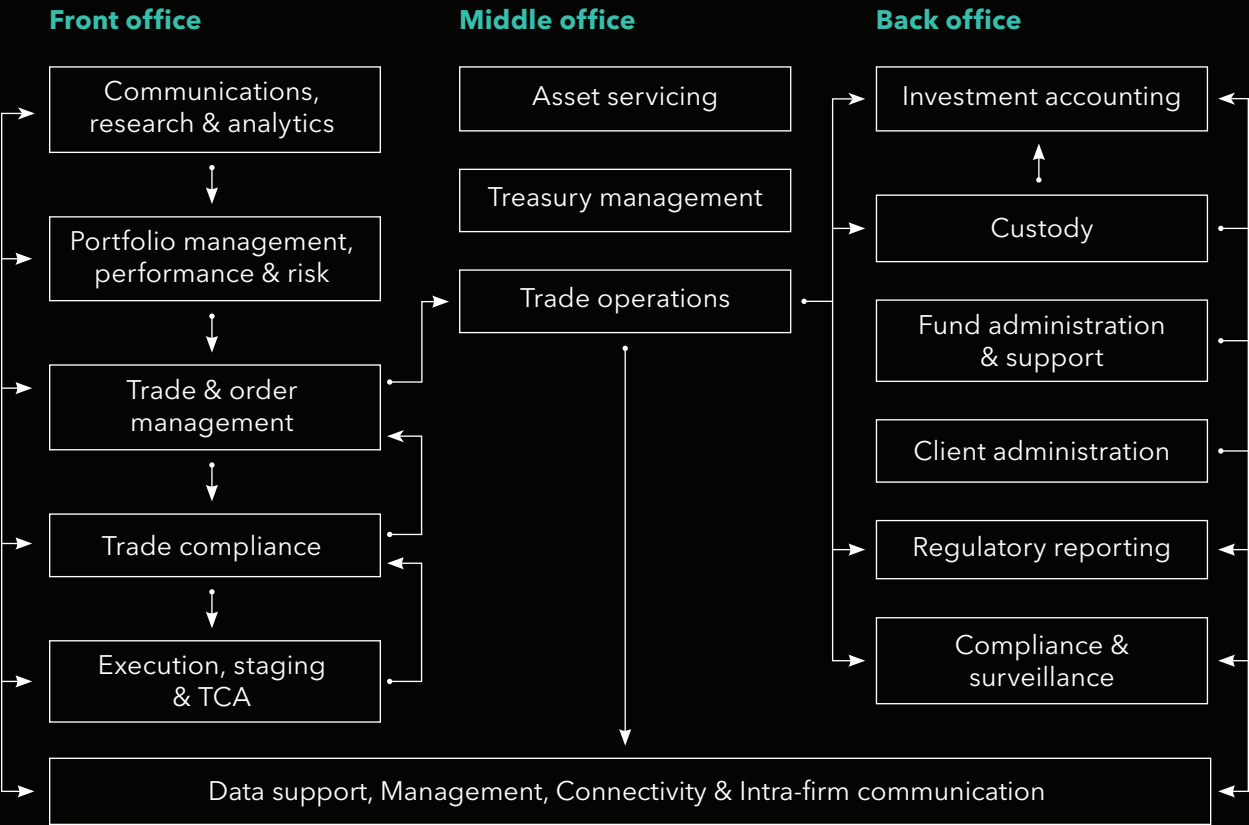
Bloomberg provides your fund's key players with the tools and support they need to power absolute return – which is why Bloomberg is the choice for leading hedge funds. With sophisticated analytics across every asset class, from fixed income to equities, commodities to FX, Bloomberg provides access to an extensive community of financial professionals and business experts to help you address the challenges of running a hedge fund. Assess your priorities with our tools, and we'll be able to get the right experts in front of you, fast.

# Full coverage of the hedge fund ecosystem.



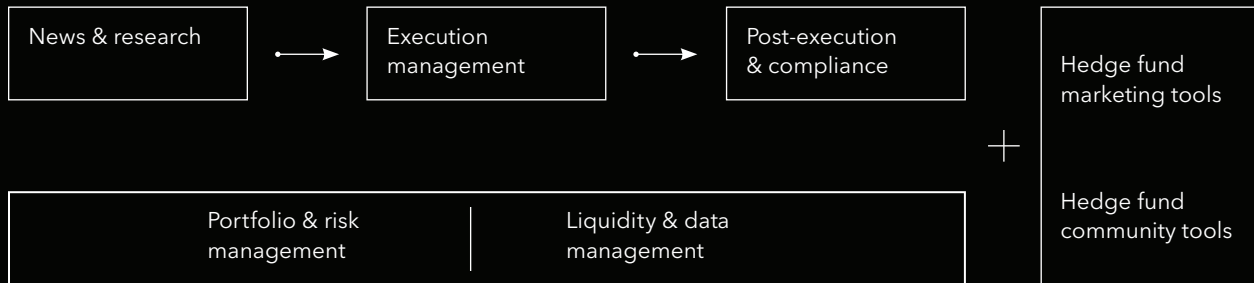


Example of a standard implementation of a fully integrated front-to-back office workflow.



# An improved workflow starts here: agility & efficiency all connected.

Bloomberg provides hedge funds with highly customizable solutions to meet every step of your workflow. From news, research and portfolio and risk management tools, to execution, compliance and order management systems, Bloomberg has the solutions to help you successfully manage and market your fund.



## Bloomberg Terminal

Global Data • News • Analytics • Fully hosted • Bloomberg Anywhere

### Portfolio Management

- Analytics
- Decision support
- Position management
- Risk management

### Trading

- Order management
- Electronic trading & execution
- Multi-asset coverage
- Multi-venue access

### Compliance

- Regulatory requirements
- Investment & internal guidelines
- Flexible template based rule construction
- Centralized surveillance

### Operations

- Allocation & matching
- Multi-asset trade settlement
- Real-time connectivity & integration
- Reconciliation
- Trusted data

# News

Bloomberg News provides comprehensive and actionable news on companies, markets and themes with powerful search, social media and translation functionality. Our 2,700 journalists and analysts in more than 120 countries publish 5,000 stories a day to deliver timely and trusted news.

All StoriesPagesCustom SearchesTop News

<Narrow>Pause

Top Stories Selected by Bloomberg | More »

1) America's Biggest Creditors Dump Treasuries in Warning to TrumpBN 02/12

2) Equities Extend Rally With Copper as Yen Weakens: Markets WrapBN 08:18

3) Stada Gets \$3.7 Billion Takeover Offer as Two Bidders EmergeBN 08:11

4) Yellen Unlikely to Rule Out March Hike in Capitol Hill TestimonyBN 05:01

Featured Stories | 1 of 3 | More »

5) Pound Tops G-10 Heap Before Yellen Revives Dollar: Markets LiveBN 09:00

6) Swiss Must Draw Up Corporate Tax Plan B to Stay AttractiveBN 07:55

7) Co-Op Bank Starts Sale Process, Mulls Debt for Equity SwapBN 09:39

8) Emerging-Market Survey Leaves Two Countries Investor FavoritesBN 02/12

9) Emboldened Rajoy Shows He's Ready to Break Vow to Spanish AllyBN 09:46

10) Dubai Stocks Biggest Decliner Globally as Arabtec's Loss WidensBFW 09:40

11) China Calls for Restraint on North Korea as UN Prepares to MeetBN 09:21

12) Refugee-Embracing Trudeau Set to Bite His Tongue on Trump VisitBN 05:01

13) Sugar Traders Brace for Wild Ride as Surplus Hangs on WeatherBN 07:49

14) Thousands in California Told to Evacuate Amid Fears Dam May FailNYT 07:19

15) Toshiba's Tale of Nuclear Reactor Woe Begins in Louisiana BayouBN 08:36

Chart of the Hour | More »

B Nestle Sales Target May Go



Year	Sales
2011	High
2012	High
2013	Medium-High
2014	Medium
2015	Medium
2016	Low
2017	Low-Medium

B First Word | More »

Grab Said to Buy Online Payment Co. Kudo for Over \$100m: Reuters [09:47]

B Ruchi Soya Ties up With Patanjali to Sell Packaged Edible Oils [09:46]

## Bloomberg News TOP <GO>

See the day's top worldwide headlines along with editorially curated charts and news digests.

Advanced EditorCustom SearchesTwitter Search

What would you like to see in your Twitter feed?  
(Browse for Twitter handles, ticker lists, markets, industries or Twitter lists)

Search All Categories

Search NewsSourcesDisplay & EditCustom SearchesPage 1News

From hedge\_funds<Narrow More>

MatchTWT\_HE...X

Translate to English | Change

1) Hedge Funds: RT @aleks\_kins\_HFs: Hong Kong Securities and Futures Commission...TWT 09:22

2) Hedge Funds: RT @aleks\_kins\_HFs: China slaps record fine, jail term on hedge fu...TWT 09:18

3) Hedge Funds: SS&C GlobeOp Hedge Fund Performance Index: January performanc...TWT 09:15

4) Hedge Funds: RT @aleks\_kins\_HFs: Hong Kong Securities and Futures Commission...TWT 09:22

5) Hedge Funds: RT @aleks\_kins\_HFs: China slaps record fine, jail term on hedge fu...TWT 09:18

6) Hedge Funds: SS&C GlobeOp Hedge Fund Performance Index: January performanc...TWT 09:15

7) Hedge Funds: RT @sophiaj99753204: The big squeeze: #hedgefunds face an ident...TWT 08:45

8) Hedge Funds: RT @isabell74347626: The big squeeze: #hedgefunds face an ident...TWT 08:44

9) Hedge Funds: RT @Jeroenknowall1: The big squeeze: #hedgefunds face an ident...TWT 08:43

10) Hedge Funds: RT @madelyn34948745: The big squeeze: #hedgefunds face an ide...TWT 08:42

11) Hedge Funds: RT @aleks\_kins\_HFs: Dollar Regains Reflation Mojo as Hedge Fund ...TWT 08:41

12) Hedge Funds: RT @emilvro55608601: The big squeeze: #hedgefunds face an iden...TWT 08:38

## Twitter Search TWTR <GO>

Find Tweets based on Twitter handles, topics, securities or people of interest to you.

5

# Research Management Solutions: create, consume & collaborate.

## Bloomberg Intelligence

Bloomberg Intelligence, BI <GO>, provides analysis of industries, companies and expert topics, delivering key data and interactive charting from Bloomberg's own experts. While highlighting critical themes and recently published research across all industries, the BI <GO> entry point allows clients to navigate to an industry or company by sector or special topics in the left-hand navigation.



### Bloomberg Intelligence BI <GO>

Access primers on an industry, company or topic and analyze key drivers and competitors.

## Research Analytics

Our Research Analytics tool, BRES <GO>, provides a comprehensive aggregation, analytics and reporting platform to account for the consumption and value of services provided by the sell side. Monitor your firm's readership of and engagement with internal and external research.

Actions Settings		Buy Side Research Analytics							
All Brokers		Timeframe YTD		Data Source		Internal		External	
Broker		Avg Rating	Analyst Mkt	Corp Acc	Bespoke	Research	Models	Other	% Cov
1 All Brokers		4.3	832	227	236	666	206	21	95.5%
2 Henrik AG		4.4	133	36	37	101	31	1	76.3%
3 KP Capital Markets		4.2	126	36	39	105	32	3	80.5%
4 Manning Brothers		4.6	119	34	35	108	33	6	90.1%
5 Pinstripe Bank		4.5	91	25	26	74	23	4	86.2%
6 Beckham & Co.		4.5	91	23	25	67	21	3	93.1%
7 Big Blue Capital		4.3	65	18	17	49	15	2	81.4%
8 Grabner Partners		3.8	57	15	15	45	14	1	65.8%
9 Blueshirt Financial		4.1	56	15	16	44	14	0	75.6%
10 Vesey Capital		3.9	55	15	15	45	14	0	76.7%
Nash Bank		4.7	39	10	11	28	9	1	55.1%

### Research Analytics BRES <GO>

Utilize a comprehensive analytics and reporting platform to track consumption and reconcile your interactions against broker records.

Internal research

Research Management Notes, RMN <GO>, is your firm’s one-stop research portal that consolidates your proprietary research, notes, events, data and models for easy access, communication and collaboration.

Actions

Research Management Solutions Demo

Create. Consume. Collaborate.

Bloomberg

Analyst

- US Equity
  - Steve Citrin
  - Nick Joseph
  - Matt McCarvill
- European Equity
- Asia Equity

Filter by Sector

- Communications
- Consumer Discretionary
- Consumer Staples
- Energy
- Financials
- Health Care
- Industrials
- Materials
- Technology
- Utilities

Note Type

- Recommendation
- Investment Update
- Meeting Note
- Earnings Note
- Model

Links

- Create Custom Reports
- Visualize Your Ideas
- Manage Your Process
- Seamless Integration
- RMS Brochure

<Narrow Search>

Focus All

Analyst All

Date All

Doc Len All

	Ticker	Headline	Analyst	Pg	Date
1)	COST US	Costco Rises on Special Dividend (Email to NOTE)	S Citrin	1	05/12/17
2)	AAPL US	Apple Developers Conference Notes (Basic NOTE)	S Citrin	1	05/12/17
3)	FB US	Notes from Facebook's F8 Developer Conference (iPad to Note)	N Joseph	1	05/11/17
4)	AMZN US	Recommendation Note - Amazon Inc. (Word to Note)	N Joseph	4	05/11/17
5)	AMZN US	Amazon Tearsheet with Model (Excel to NOTE)	S Citrin	1	05/11/17
6)	VOD LN	Recommendation Note - VOD LN (Advanced NOTE)	S Citrin	1	05/11/17
7)	NFLX US	NFLX One-pager w/ Model	S Citrin	1	05/05/17
8)	TWTR US	Twitter Surprises by Adding New Users, Sends Shares Soaring	M McCarvill	1	05/05/17
9)	F US	Ford Working Model	M McCarvill	1	05/05/17

Research Management Notes  
RMN <GO>

Integrate your entire firm’s research in one location on the Terminal.

Research Portal

Bloomberg’s Research Portal, RES <GO> (or BRC <GO> for a single security), delivers research from 2,500 providers commingled with your internal research for centralized access and management. Search and filter content quickly and read research reports seamlessly in real time or on the go through the research tool on the Bloomberg Professional app.

All Research

Actions

Custom Searches

Settings

Research

<Narrow this search>

Sort Time Ordered

Filters

	Ticker	Headline	Source	Pg	Date	Asset Class
1)	2018 HK	[GF Securities] AAC Technologies (2018 H...	Guangfa Sec...	4	03/26/15	Equity
2)	935 HK	CER Company Report - Dragon Crown (935...	Everbright S...	4	03/26/15	Fixed Income
3)	CSAN3 ...	ALLL3 BZ: Termination of Coverage Follow...	Euro Pacific ...	4	03/26/15	FX
4)	VMART IN	RELIGARE: INITIATES VMART WITH BUY ON...	Religare	1	03/26/15	Analyst Action
5)	VLL PM	Unicapital Securities revises target price ...	Unicapital Se...	5	03/26/15	Initiation
6)	MCP PM	Unicapital Securities Initiates 'Buy' on MCP	Unicapital Se...	4	03/26/15	Drop
7)	4523 JP	[Delayed] 4523 Eisai:Rating raised to Buy...	Daiwa Securi...	6	03/26/15	Revisions
8)	3888 HK	[GF Securities] Kingsoft (3888 HK, Accum...	Guangfa Sec...	5	03/26/15	Upgrade
9)	011070...	(Jongwook Lee) LG Innotek (011070/BUY...	Samsung Sec...	10	03/26/15	Downgrade
10)	3337 HK	ANTON OILFIELD SERVICES GROUP (3337 H...	Shenwan Hon...	1	03/26/15	
11)	TWTR US	TWTR: Downgrading to Hold, Maintaining \$...	Pivotal Rese...	1	03/26/15	
12)	SCUF IN	RELIGARE: INITIATES SHRIRAM CITY UINIO...	Religare	1	03/26/15	
13)	CIFC IN	RELIGARE: INITIATES CHOLAMANDALAM INV...	Religare	1	03/26/15	
14)		Rationale - Ratings Upgrade - Sarvesh Re...	Brickwork R...	1	03/26/15	
15)	SAKP M...	SAKP MK Equity	Kenanga Inv...	1	03/26/15	
16)	4502 JP	New Street: Takeda (4502, Buy): Raising ...	New Street R...	1	03/26/15	
17)		Cellerant: LifeSci Capital Initiates Covera...	Lifesci Capital	1	03/26/15	
18)		Rationale - Ratings Upgrade - Southern A...	Brickwork R...	1	03/26/15	
19)	EARS U...	EARS: LifeSci Capital Initiates Coverage of...	Lifesci Capital	1	03/26/15	
20)	IBG CN	IBI Q4/14 Below Estimates, Debt Refinanc...	Laurentian B...	1	03/26/15	
21)	035760...	(OJ Nam) NS Shopping (BUY): The home-...	Samsung Sec...	1	03/26/15	
22)	086520...	(JungHoon Chang) Ecopro (086520/BUY): ...	Samsung Sec...	1	03/26/15	
23)	2333 HK	CER Company Report - Great Wall Motor (...	Everbright S...	1	03/26/15	

3:39

Back Email attachment.pdf

ABC Securities

Upgrading LMD to a BUY with a \$800 Target

6/15

7/15

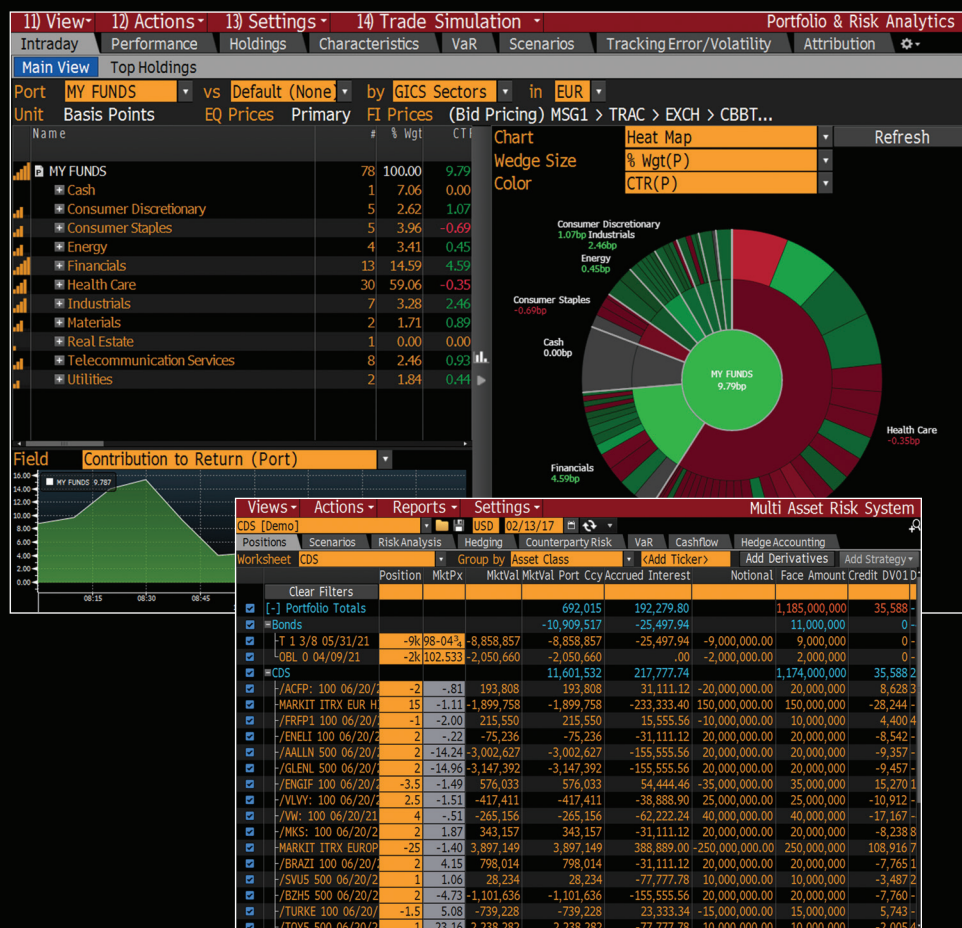
The Bloomberg Research Portal  
BRC <GO>

Instantly retrieve research and send data. Download and read research from the Bloomberg Professional mobile app from wherever you are.



# Portfolio & risk management: tools for deeper insight.

Empower the front office and back office to communicate flawlessly. Get tools that break down the structure of portfolios, analyze positions and active bets, and explain the drivers of historical performance and potential sources of future risk.



## Portfolio & Risk Analytics PORT <GO>

Analyze your portfolio by sector, geographic region or any other custom classification.

## Multi-Asset Risk Analytics MARS <GO>

Manage positions in real time, all in one place.

## Portfolio & Risk Analytics

Bloomberg's Portfolio & Risk Analytics solution gives you the ability to analyze the historical performance of your equity, fixed income or multi-asset portfolio on an absolute basis or relative to a benchmark. Identify the sources of your portfolio's absolute or excess return by asset class, sector, geographic region, a custom classification and even based on Bloomberg's multi-factor risk model.

## Multi-Asset Risk Analytics

Our Multi-Asset Risk System (MARS) allows you to monitor and manage front office risk, market risk, counterparty risk and collateral for a multi-asset portfolio of equity, FX, interest rate, inflation and commodity derivatives instruments.



22.26

31.19

14.62

75.61

75.08

80.16

32.56

93.94

78.38

12.16

14.64

55.38

73.84

13.20

18.72

90.62

88.21

34.84

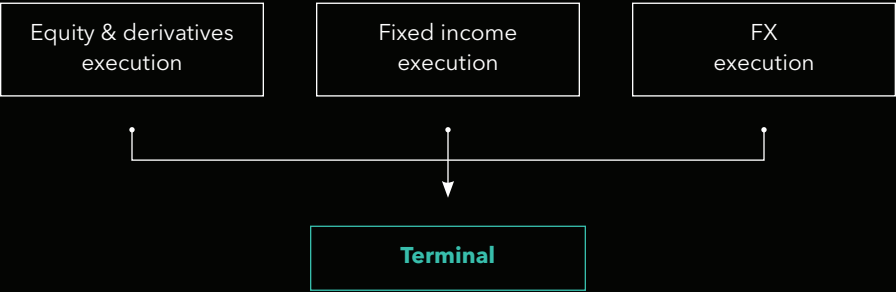
85.10

# Execution management: everything on a single platform.

Bloomberg provides trading solutions and sophisticated analytics, all on a single platform. EMSX is a multi-asset-class trading platform that integrates Bloomberg exchange and broker data with equity, futures and options orders.

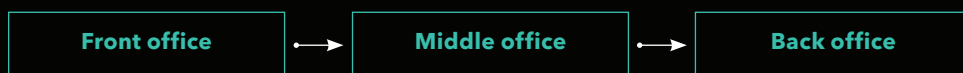
Bloomberg Fixed Income Trading (FIT) is the world's largest and most widely used fixed income trading platform, providing liquidity, trading functionality and straight-through processing across all fixed income asset classes. Manage your fixed income trade orders and ideas in TSOX. Execute permitted and required transactions using Bloomberg's swap execution facility (BSEF).

FXGO is a commission-free electronic trading platform for execution of FX spot, outright, swap, NDF and option transactions as well as deposits and precious metals.



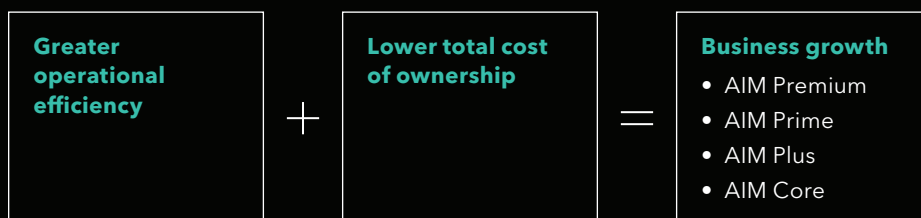
# Order management: a simplified data flow.

Bloomberg Asset and Investment Manager (AIM) delivers global, multi-asset solutions for front-to-back portfolio, trading and middle- and back-office operations.



AIM offers an integrated suite of solutions including: decision support and portfolio management; pre-trade, post-execution and end-of-day compliance; order management, electronic trading and execution; and post-trade matching, settlement, reconciliation, portfolio accounting, performance measurement and data aggregation and reporting.

## The AIM difference



Bloomberg delivers AIM on a hosted platform eliminating the need to have dedicated workstations or servers on your premises, so you can lower your total cost of ownership. We take on the development inherent with changing markets, instruments and technologies, such as infrastructure build-outs, version upgrades, data sourcing, continual tuning and system maintenance.

# Post-execution & compliance: a better way to share information.

Bloomberg provides a full suite of solutions so that your fund can share information quickly and securely in order to stay MiFID II and MAR compliant.



## Best trade execution (MiFID II)

Bloomberg Transaction Cost Analysis is a post-trade TCA tool that integrates trades with Bloomberg market data. Together, they deliver comprehensive analysis that encompasses a wide range of benchmarks.

## Market surveillance (MAR & MiFID II)

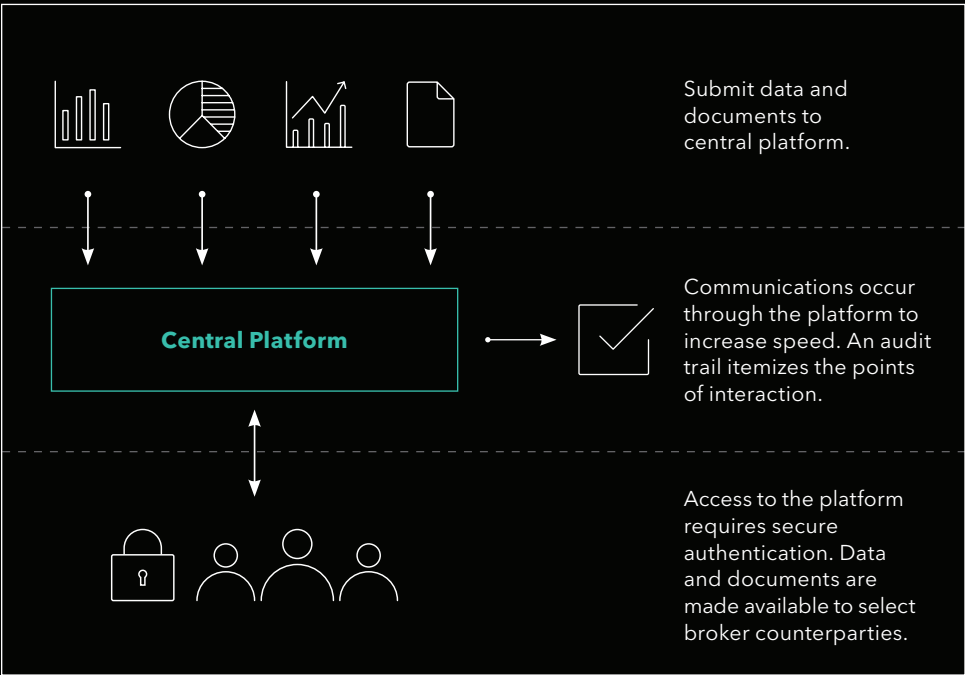
Bloomberg Vault is an end-to-end secure hosted data management solution that consolidates a hedge fund's compliance, legal and data management processes into an integrated, real-time system.



### Trading counterparty information management: KYC

Bloomberg Entity Exchange is a web-based platform that streamlines the exchange of documents between trading counterparties to centrally manage and share client data and documents securely. This accelerates the on-boarding process without sacrificing control over sensitive information.

#### An optimal KYC workflow for the buy side



### Straight-through processing

Bloomberg STP is a real-time, multi-asset-class platform that provides an aggregated trade life cycle service, including confirmation matching, settlement exception and custodian link. We also provide a stand-alone portal with post-trade chat access to efficiently communicate and resolve trade discrepancies.

#### Life cycle

- Block trade affirmations (VCON)
- Allocation notification
- Global electronic trade confirmation matching

#### Data

- Metrics/Scorecard
- FailStation
- SSI enrichment
- Collateral monitor
- Position viewers

#### Community

- Multi-asset-class STP trade blotter
- Post-trade chat (PTC)
- STP portal

#### Connectivity

- STPStation data normalization
- Support for industry messaging standard formats (FIX, SWIFT, FpML, Files)

# Liquidity & data management: an efficient data platform.

Acquire, organize and distribute data efficiently under one platform.

## Liquidity assessment

Part of Bloomberg's Regulatory and Accounting offering, helps you measure the liquidity risk of portfolio holdings by measuring the bond's liquidation cost, time-to-liquidation and the probability of selling.

## Bloomberg Data

Data feeds that give you the information you need to power your enterprise, including consolidated real-time market data (over 35 million instruments across all asset classes), reference data, regulatory data and 5,000 news stories a day in more than 120 countries.

## Bloomberg Valuation (BVAL)

An independent pricing service for fixed income securities, OTC derivatives and structured products that provides transparent evaluated price information for OTC derivatives and structured notes.

## Bloomberg PolarLake

An enterprise data management system that centrally acquires, manages and distributes financial data and internal custom data.

# Connectivity & integration: what you need, where you need it.

## Terminal & custom application integration

Use Bloomberg's infrastructure to deploy proprietary applications and link Terminal functionality with third-party products through our App Portal and Terminal Connect solutions.



**Terminal**



## Connectivity & integration solutions

Bloomberg gives you access to the technology products needed to manage integrated systems, the solution architects required to design, build and analyze managed capital markets workflows, and the professional services essential to implement changes at scale.

# Marketing solutions: connect with greater insight.

## Investor mandates

Our Mandate Portal provides access to new and historical investment mandates by institutional investors globally. Search for open mandates via criteria such as strategy, regional focus and AUM. (Limited users only).

1) News Briefs
99) Create Mandate
Mandate Portal
Currency: USD

2) Mentioned in the News (NI MANDATE)

11) Camden: Have your say on how free nursery plac... G03 11:54
12) InvestmentEurope: Hedge funds: the 2017 outlook NS3 09:18
13) I&P Europe: PKH mandate catalyses new BlueBay... NS3 14:09
14) Gulf News (AE): A \$200b Danish investor sorts ba... NS8 12:02
15) Camden: Have your say on how free nursery plac... G03 11:54
16) Investment Week: Franklin Templeton unveils pai... NS3 10:39
17) InvestmentEurope: Hedge funds: the 2017 outlook NS3 09:18
18) Mauritius SE: Stonebridge Properties Limited - ac... FM8 08:52
19) [Delayed] Moelis: Record Revenue, Aramco Mand... JPM 06:50
20) A \$200 Billion Danish Investor Sorts Bad Hedge F... B BN 06:20 +

3) Latest Mandate: Calibrium AG
Open Amt (M) --
Strategy Opportunistic Hedge Fund
4) View Map

5) Search Mandates (MNDS)

Firm Name	Strategy	Open Amt (M)	Mgr Min AUM (M)	Track Record (years)	Region Focus	Last Updated
31) Calibrium AG	Opportunistic Hedge...	--	0	0 or more	Asia Pacific (Developed)...	02/09/17
32) Calibrium AG	Opportunistic PE	--	0	0 or more	Asia Pacific (Developed)...	02/09/17
33) City of Philadelphia Municip...		--	0	5 or more	Asia Pacific (Developed)...	02/09/17
34) Dahab Associates Inc		30	0	0 or more	North America, United S...	02/09/17
35) Employees Retirement Syst...	Multiple Hedge Fund...	--	300	3 or more	Asia Pacific (Developed)...	02/09/17
36) Kirkbi Invest A/S	Multiple PE (2)	--	1,129	0 or more	North America, United St...	02/09/17
37) Lookout Mountain Capital Inc	Long/Short Equity	--	--	0 or more	Asia Pacific (Developed)...	02/09/17
38) Turtle Creek Investment Ad...	Debt	--	0	0 or more	Global	02/09/17
39) Willis Towers Watson PLC	Multiple PE (9)	--	300	5 or more	Asia Pacific (Developed)...	02/09/17

### Investor Mandates MND <GO>

Keeps you up-to-date and informed on the type of strategies investors are targeting.

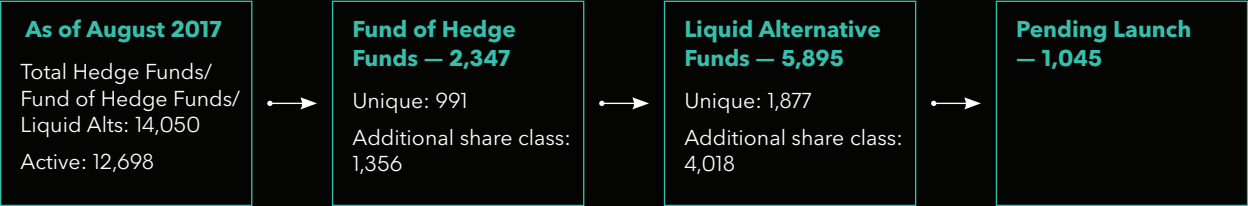
## Industry & performance intelligence

*Bloomberg Brief - Hedge Funds*, our weekly digital newsletters, provide coverage of fund performance, people moves, market calls, interviews within the community, launches, closures, institutional investor searches and other exclusive industry news and data. Subscribe to one or all three of our Hedge Fund Briefs, with a Europe, Asia or Global focus.

## The hedge fund database

Adding your fund to Bloomberg's Hedge Fund Database enables you to gain visibility to credible investors. Control levels of discoverability by using tiered access tools. Screen through a growing database of more than 3,000 hedge funds and nearly 3,000 liquid alts.

Total coverage



People Profiles

People Profiles gives you access to Bloomberg's vast database of biographical and contact information; you can conduct research on prominent global figures and enhance your contact network.

2) Clear Search

Actions

Total Profiles 2,722,997

Search by Criteria

Contact

4) More

<Name>

<Focus>

Career

5) Less

<Company / Fund>

<Role>

US

<Industry of Company/Fund>

☒ Include Subsidiaries

☒ Include Present Career

☐ Include Past Career

Career Start (Months Ago)

1 2 6 12 18 24 36 48 60 120

Results (1,300/1,497)

	First Name	Last Name	Company	Title	Location
101	Douglas A	Kass	Seabreeze Partn...	Fund Manager	Palm Beach
102	Stephen P	Winterstein	Wilmington Trust...	Managing Di...	Wilmington
103	Axel G	Merk	Merk Investment...	Pres/Chief I...	San Francisco
104	Victor	Niederhoffer	Manchester Tradi...	Chairman	Weston
105	Alan M	Gayle	RidgeWorth Inve...	Director:Ass...	Richmond
106	John Peter	Hussman	Hussman Econom...	Chairman/P...	Ellicott City
107	Paul	Digiacomo	Columbia Intl Sto...	Member: Fu...	Boston
108	Phillip J	Orlando	Federated Global...	Chief Equity...	New York
109	Phillip F	Goldstein	Insured Muni Inc...	Co-Manager	Milwaukee
110	Gregory N	Weiss	Boston Partners ...	Director/Po...	New York
111	Stephan	Maikkula	Delaware Interna...	Member:Fu...	San Diego

John Smith

President/Chief Invsmt Officer  
ABC Investment Co.

+1-303-302-9000 (o)

jsmith@bloomberg.net

123 Main Street  
New York, NY 12345, US

Career | More »

ABC Investment Co.

President/Chief Invsmt Officer

Present

Lazard Freres & Co

Dir:Emerging Market Research

Former

JP Morgan Securities LLC

Security Analyst

Former

Education

University of California Berkeley

Bachelor's Degree

Certificates

Chartered Financial Analyst (CFA)

Date/Place of Birth

Denver, Colorado, United States

October 1967

Focus

Aerospace & Defense | Technology | Media | Consumer Products | Auto...

Funds Managed (7 Funds / 3.3B Total Assets in USD)

Fund Name	Tot Ast	YTD Ret	3M Px	Objective
21) ABC Advisor International Small	1.0B	-6.3		Value Small Cap
22) ABC Funds – European Smaller C	786.5M	-4.5		Blend Small Cap
23) ABC Investment Funds – Europe	633.3M	-6		Value Large Cap

News

41) Daily Reckoning: The Real Reason Gold Prices Are Falling NSG 07/30

42) BusinessDay (ZA): Gold is out of fashion, like flared pants NSG 07/30

43) BusinessDay (ZA): Yellow metal is out of fashion, like flare... NSG 07/30

44) Gold Out of Style Like Bell-Bottom Trousers Signals Lower P... B BN 07/29

45) Commodity Losses Accelerate as Miners See Lows of 2009 C... B BN 07/22

46) Bears Recharge with Short Sales Highest Since Financial Cri... B BN 07/09

47) Bears Get Rare Victory on U.S. Stocks as Shorts Index Falls... B BN 07/09

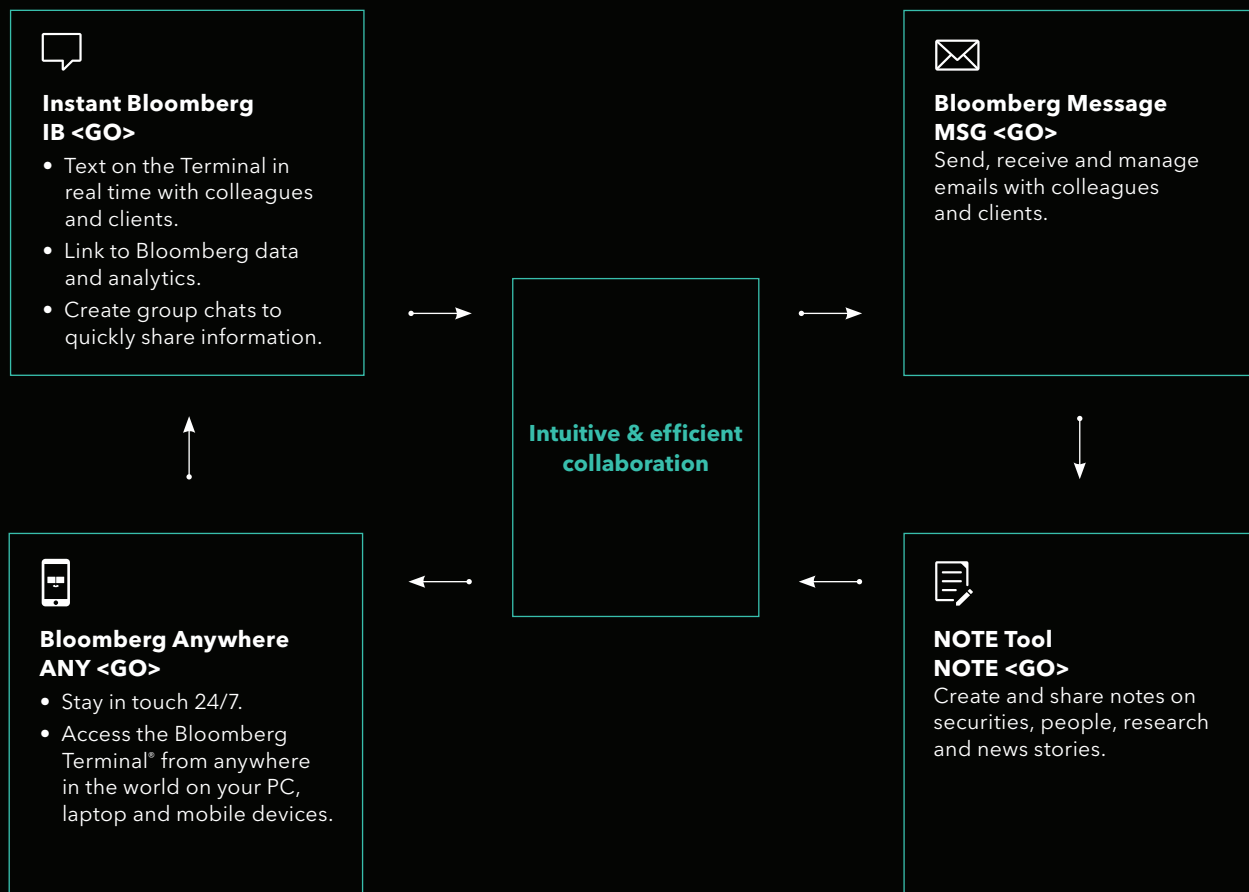
48) Cambiar Investors Holdings in 1st Quarter: 13F Alert BN 06/06

People Profiles  
PEOP <GO>  
Search biographical  
and contact info so you  
can build your network.

Plan sponsor search

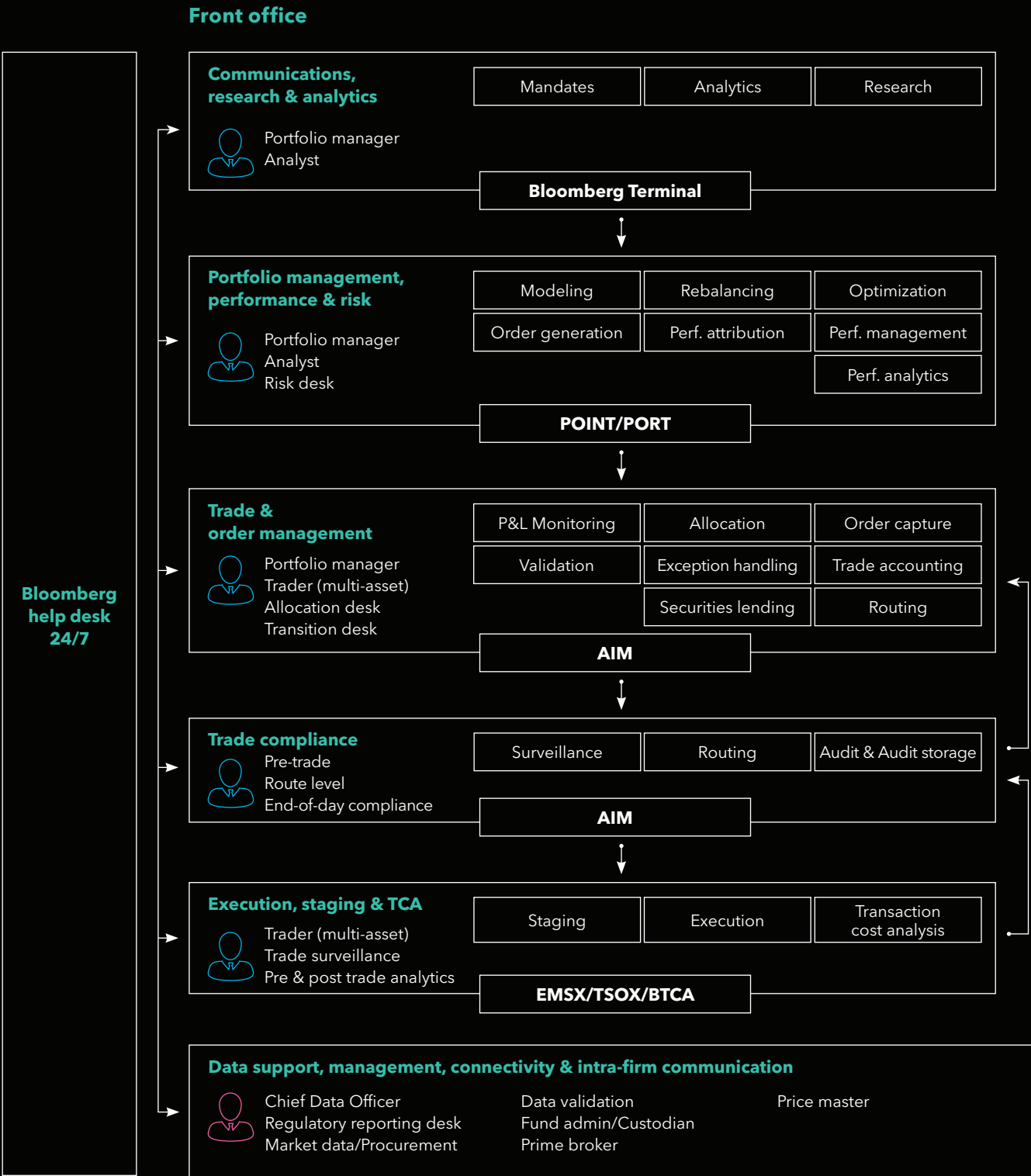
Perform a targeted search for a plan sponsor data on more than one million plans, including corporate pension plans, retirement plans, endowments, foundations, hospital plans, public and union plans.

# Community tools: collaborate freely.

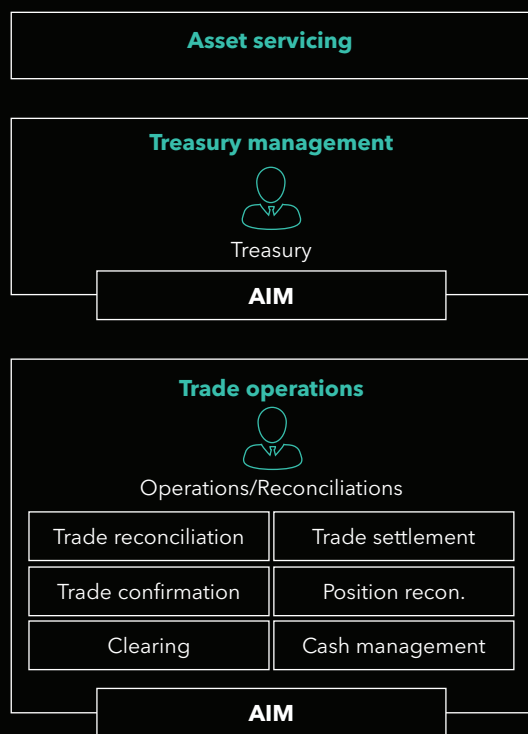




# Illustration of Bloomberg's recommended front-to-back workflow.



## Middle office



## Back office



Market data services (Partially & fully managed)	Corporate actions	Reference data mgmt
Governance	Data delivery	Storage

Connectivity gateways/PolarLake/Enterprise data

# About the Bloomberg Terminal.

Since 1981, business and financial professionals have depended on the Bloomberg Terminal® for the real-time data, news and analytics they need to make the decisions that matter. The Terminal provides information on every asset class — from fixed income to equities, foreign exchange to commodities, derivatives to mortgages — all seamlessly integrated with on-demand multimedia content, extensive electronic-trading capabilities and a superior communications network.

Take the next step.

For additional information,  
press the <HELP> key twice  
on the Bloomberg Terminal®.

**Beijing**  
+86 10 6649 7500  
**Dubai**  
+971 4 364 1000  
**Frankfurt**  
+49 69 9204 1210

**Hong Kong**  
+852 2977 6000  
**London**  
+44 20 7330 7500  
**Mumbai**  
+91 22 6120 3600

**New York**  
+1 212 318 2000  
**San Francisco**  
+1 415 912 2960  
**São Paulo**  
+55 11 2395 9000

**Singapore**  
+65 6212 1000  
**Sydney**  
+61 2 9777 8600  
**Tokyo**  
+81 3 3201 8900