

Bloomberg

Bloomberg Software Installation Manual

New Bloomberg Terminal® Installer (InstallAware)

English

10 April 2020

Version: 1.3

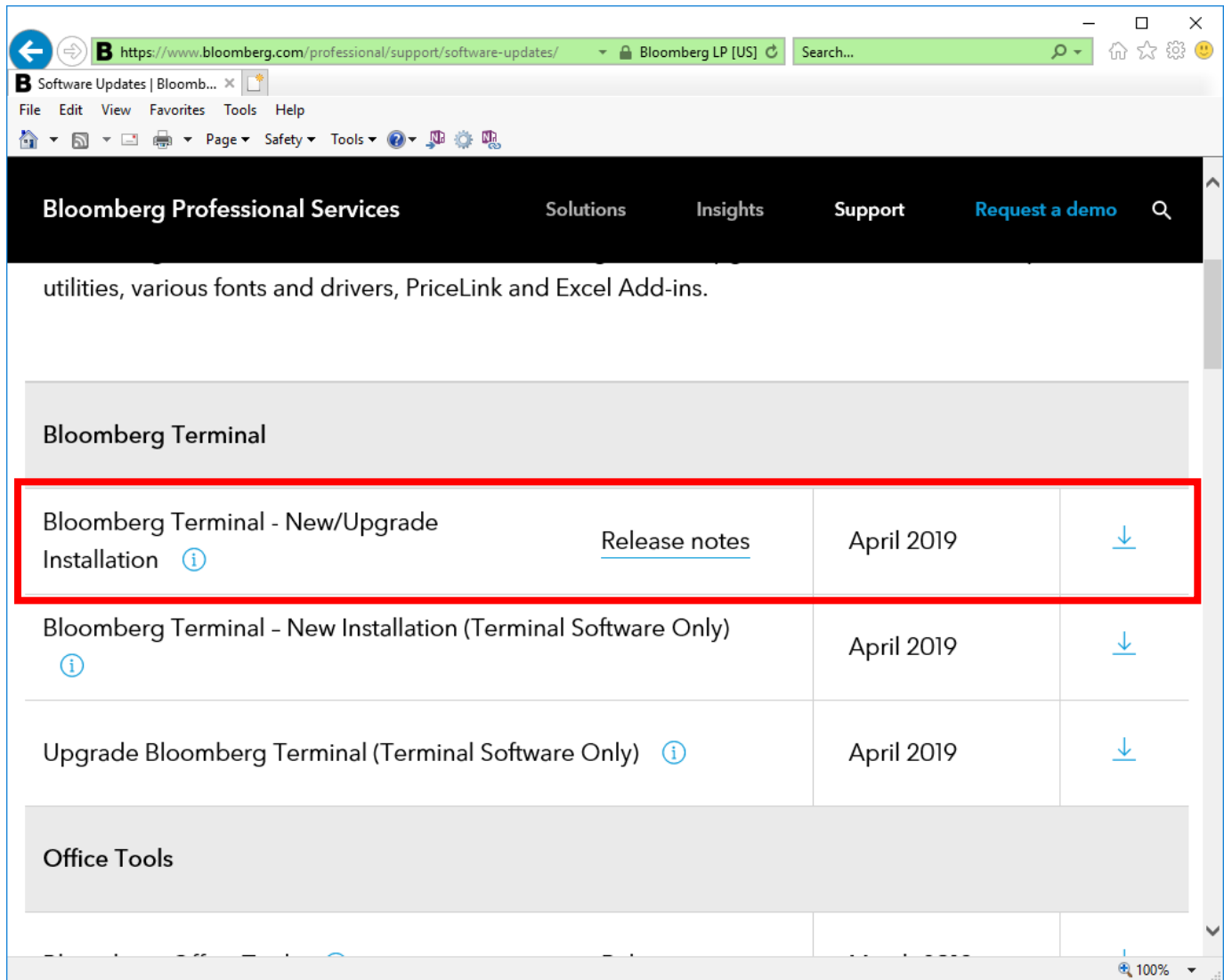
Contents

I. Download the Bloomberg Software	2
II. Install the Bloomberg Software	3
III. Install the Bloomberg Serial Number (New Options).....	8
Installing Serial Number (S/N)	8
APOD Creation.....	9
How to Create a Serial Number(S/N) by Bloomberg Anywhere user	9
Quick Install for Bloomberg Anywhere user.....	10
BCHG	11
How to re-install a Serial Number for Open Terminal users.....	11
Auto BCHG with Login Name.....	11
Advanced Options.....	13
Manual BCHG.....	14
IV. Ref: Install the Bloomberg Serial Number (Legacy Options)	15
V. Testing the Bloomberg Terminal	19
VI. Minimum File and Registry Rights for the Bloomberg Application	20

I. Download the Bloomberg Software

From Internet Explorer, Chrome or other WEB Browser, enter the following URL in the Address field to download the complete Bloomberg installation package.

<http://www.bloombergsoftware.com>



utilities, various fonts and drivers, PriceLink and Excel Add-ins.

Bloomberg Terminal

Bloomberg Terminal - New/Upgrade Installation i	Release notes	April 2019	↓
Bloomberg Terminal - New Installation (Terminal Software Only) i		April 2019	↓
Upgrade Bloomberg Terminal (Terminal Software Only) i		April 2019	↓

Office Tools

Click [Bloomberg Terminal – New/Upgrade Installation] to perform a Full Installation.

Please save the software for new installation in any place such as Windows Desktop.



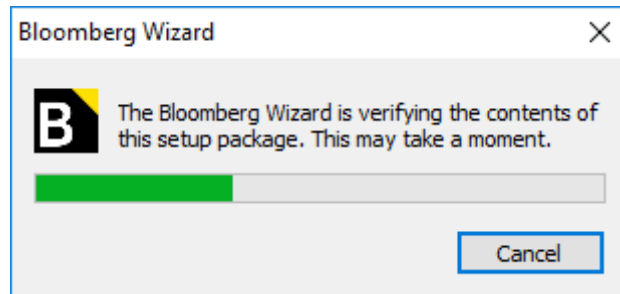
NOTE: Be sure to install the Bloomberg Terminal® under a login with Administrator rights.

For 24 hour global customer support call +1 212 318 2000, +44 20 7330 7500, +65 6212 1000, +81 3 4565 8900 or press the HELP key twice on the Bloomberg Terminal®.

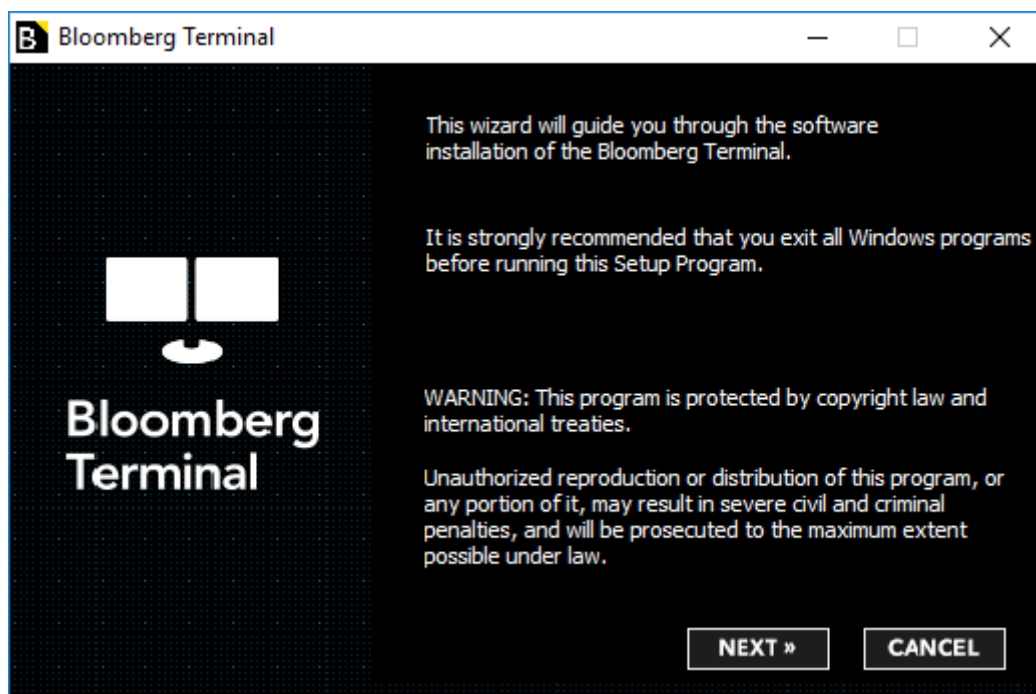
Bloomberg

II. Install the Bloomberg Software

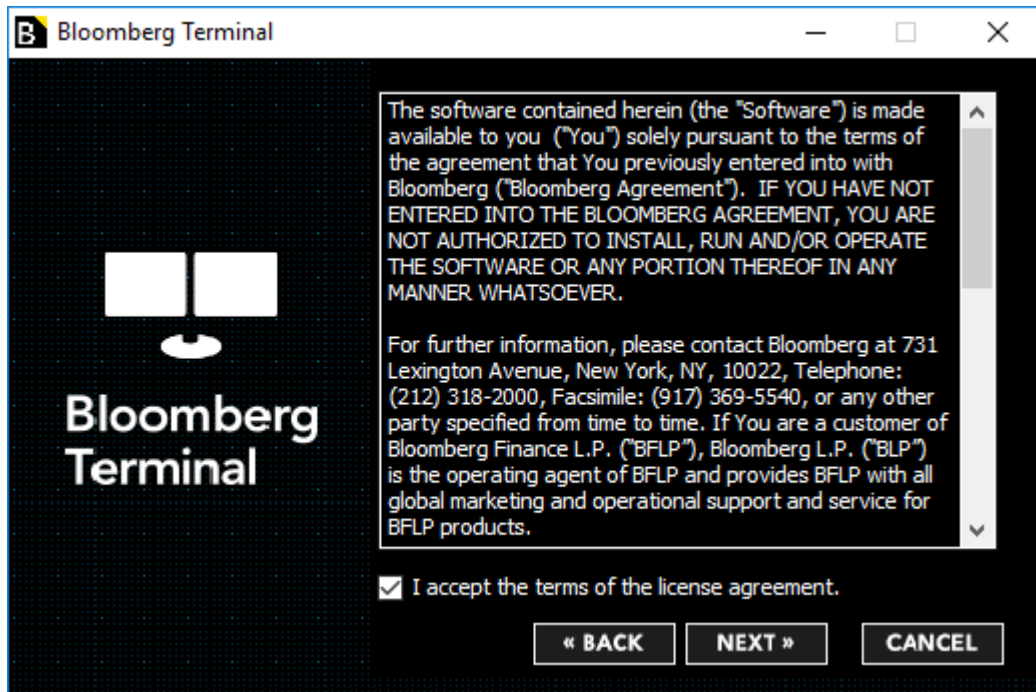
After the software download is complete, double-click the icon located on your desktop. This will execute the InstallAware Installation Wizard for the Bloomberg Terminal®.



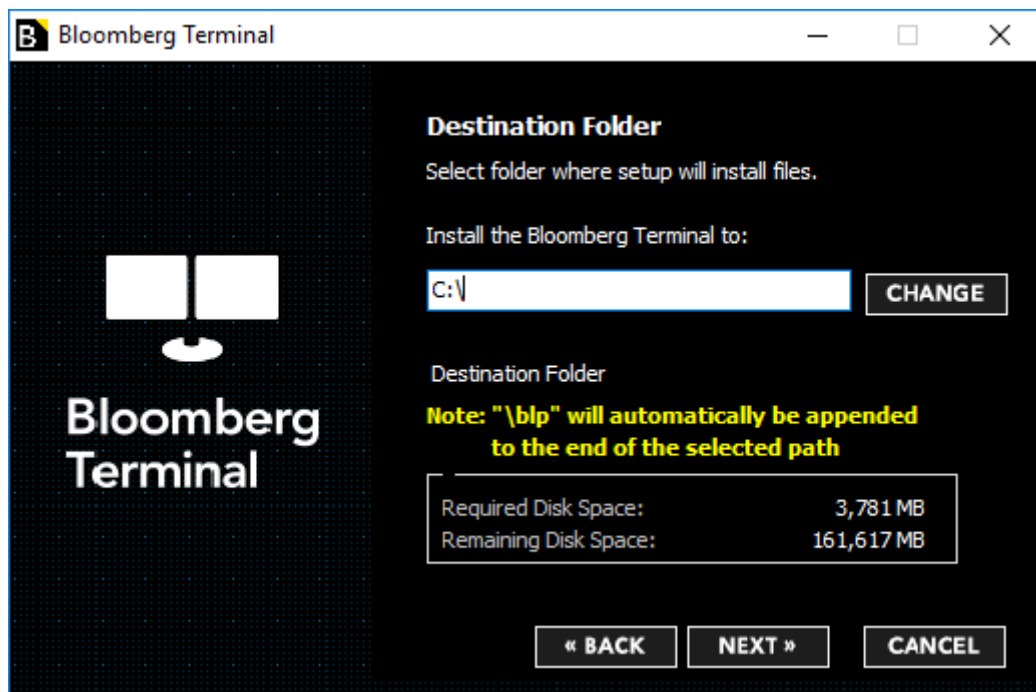
While the Bloomberg Wizard decompresses itself, this message box will appear on screen.



Please click the **NEXT** button to continue or **CANCEL** to exit the installation.



Please review the License Agreement and confirm you agree to it by checking the box. Should you not wish to accept these terms, please click the **CANCEL** button and the installation will be cancelled.

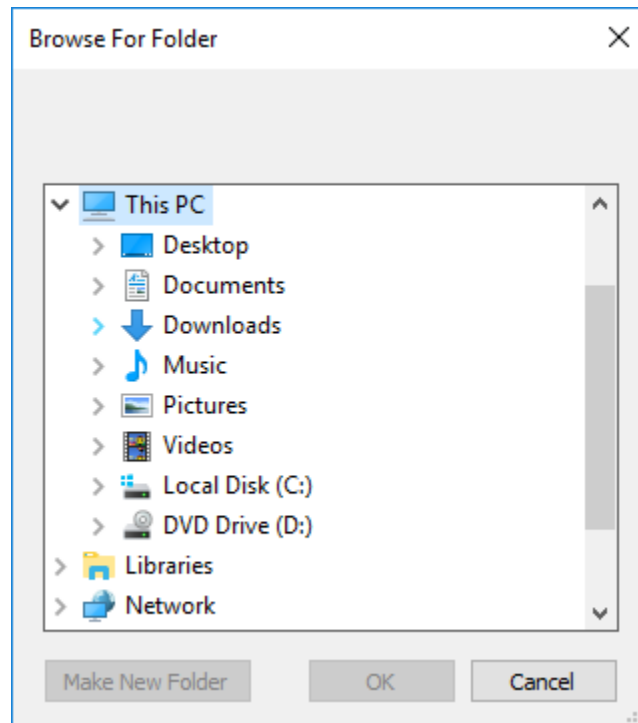


The default location for the installation of the Bloomberg Terminal® software is automatically populated. Bloomberg Terminal® software will always be installed in the blp folder of the selected location. Click on **NEXT** to accept this location and continue. If you proceed with the setting above, Bloomberg Terminal® will be installed into the C:\blp folder.

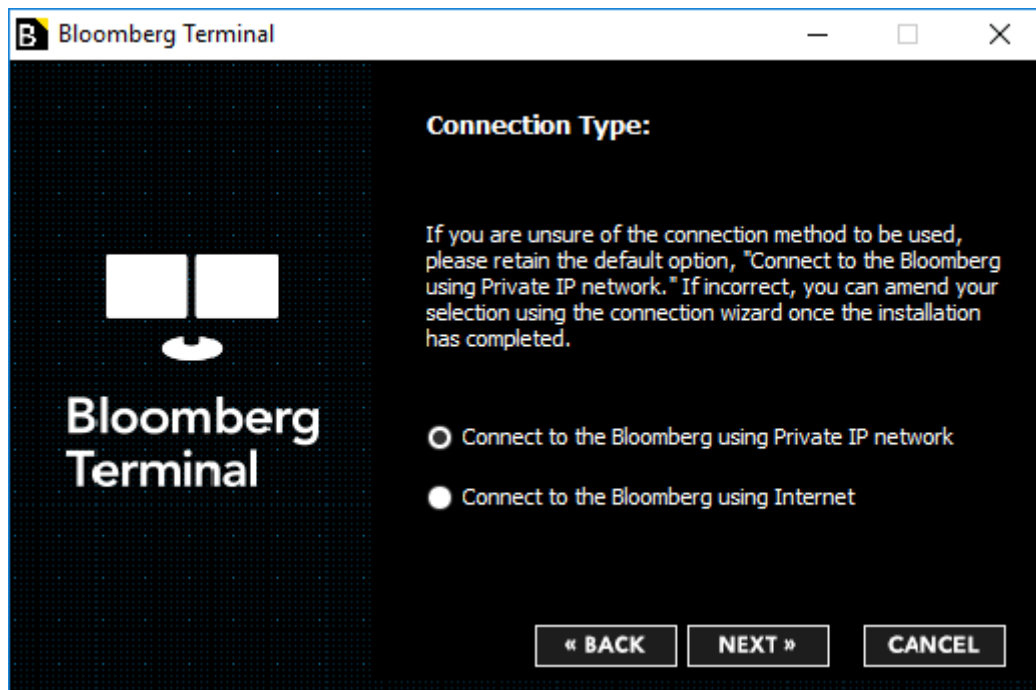
If you need to change the location, you can enter the desired location, or click on the **CHANGE** button to open a dialog box where navigate to the location. Click on OK to return. Click on **NEXT** to continue.

For 24 hour global customer support call +1 212 318 2000, +44 20 7330 7500, +65 6212 1000, +81 3 4565 8900 or press the HELP key twice on the Bloomberg Terminal®.

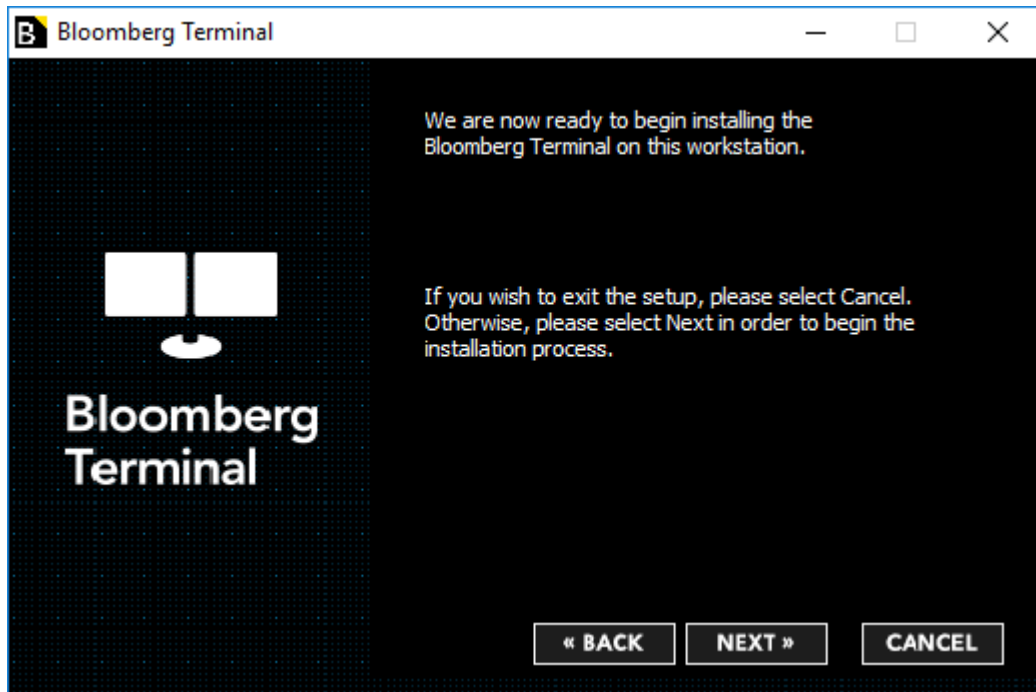
Bloomberg



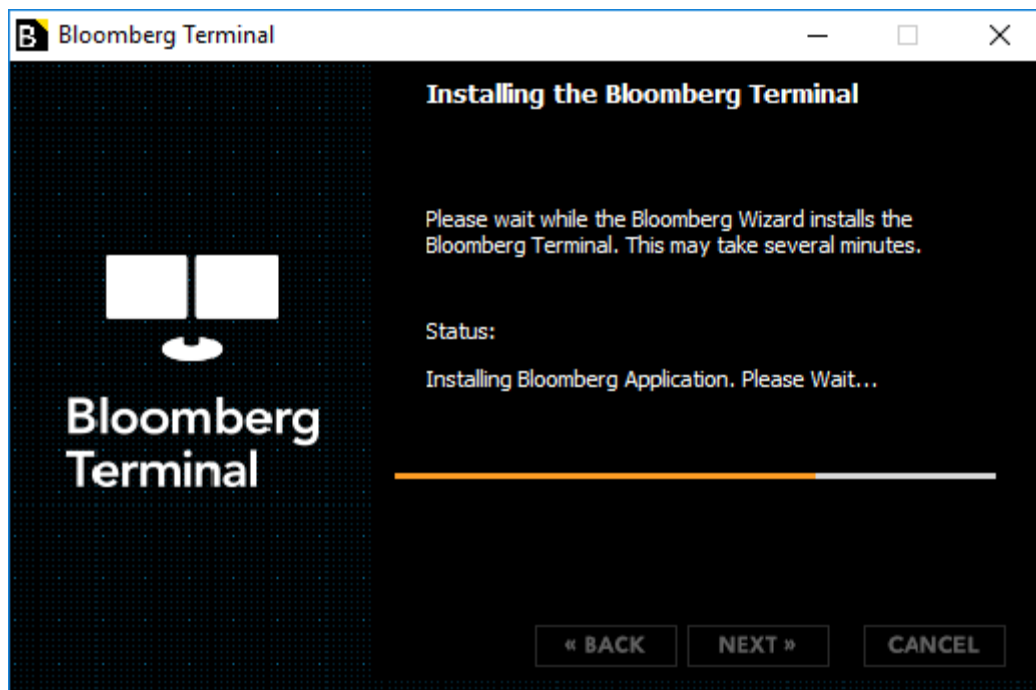
Note: If the installer detects a previously installed version, the existing location will be respected and this screen will not be displayed.



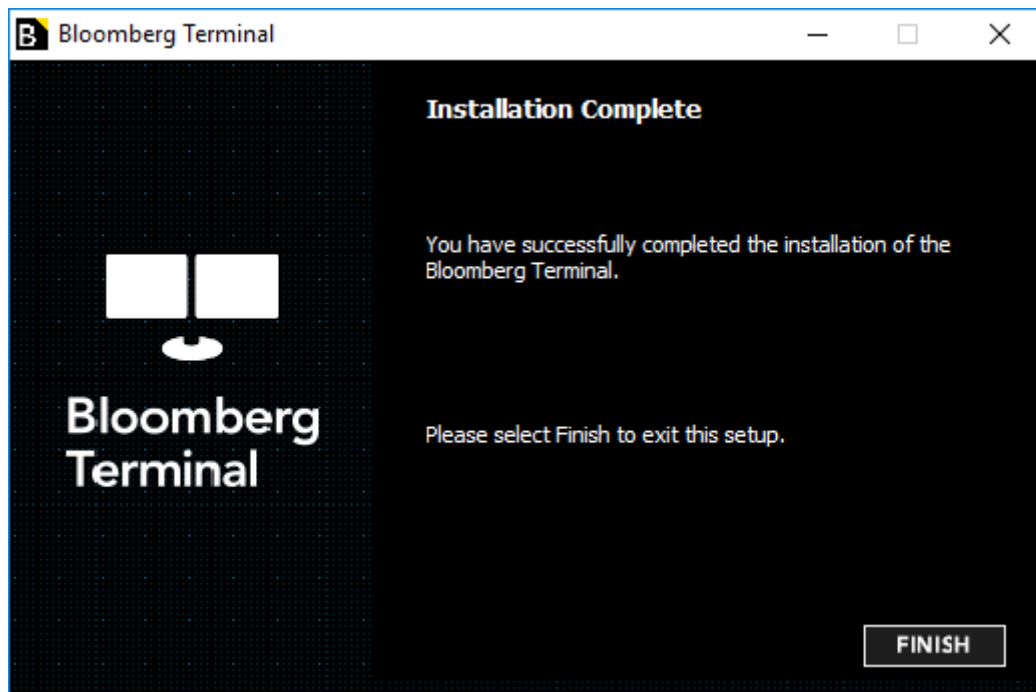
This screen will configure the desired connection method for your Bloomberg Terminal®. The default setting is “Connect to the Bloomberg using Private IP network” as this is the most common connection type and should be selected if you are unsure which method you should be using. In any case, this setting can be changed after the installation is complete.



The preparation stage is complete - we are now ready install the software. Click on **NEXT** to proceed, or if you need to change any of the choices you have already made, click **BACK** to review.



Start to install the Bloomberg Terminal®.



The figure above shows the installation process is now complete. After clicking **FINISH**, you will now be able to launch Bloomberg by double clicking the Bloomberg icon on your Desktop.

III. Install the Bloomberg Serial Number (New CONN Options)

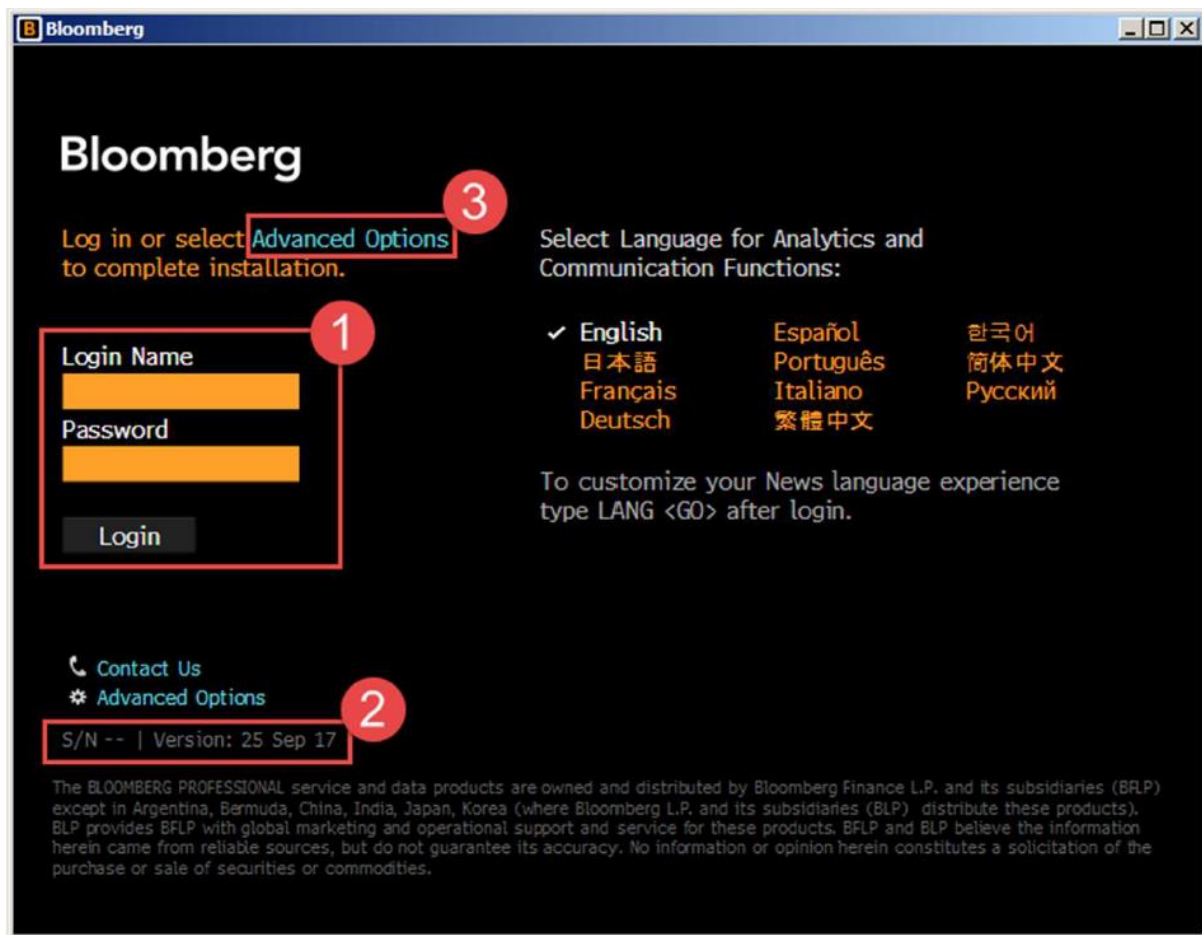
The following “**Installing Serial Number (S/N)**” section is reprinted from the “**Market Data Manual**”. The “**Market Data Manual**” contains information that is very useful for customers who are introducing the Bloomberg Terminal® for the first time. Please refer to “Market Data Manual” as well.

*The “**Market Data Manual**” can be downloaded here:

<https://www.bloomberg.com/professional/support/documentation/>

Installing Serial Number (S/N)

After installing the software package, you will see below screens.

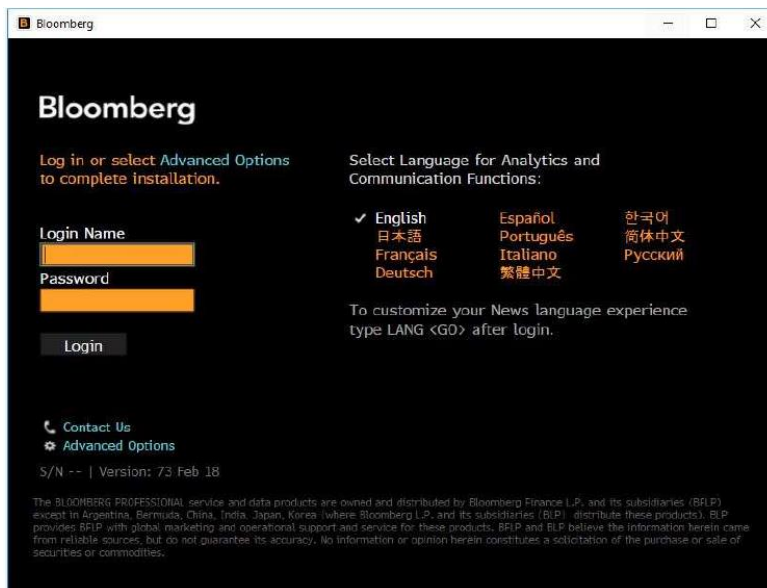


1. Login Area for Username and Password.
2. If the terminal already has an active Serial Number it will appear in this area along with the software version.
3. Advanced Options can be used by IT Technicians and users to access further options to help with creating a Serial Number or re-installing an existing Serial Number.

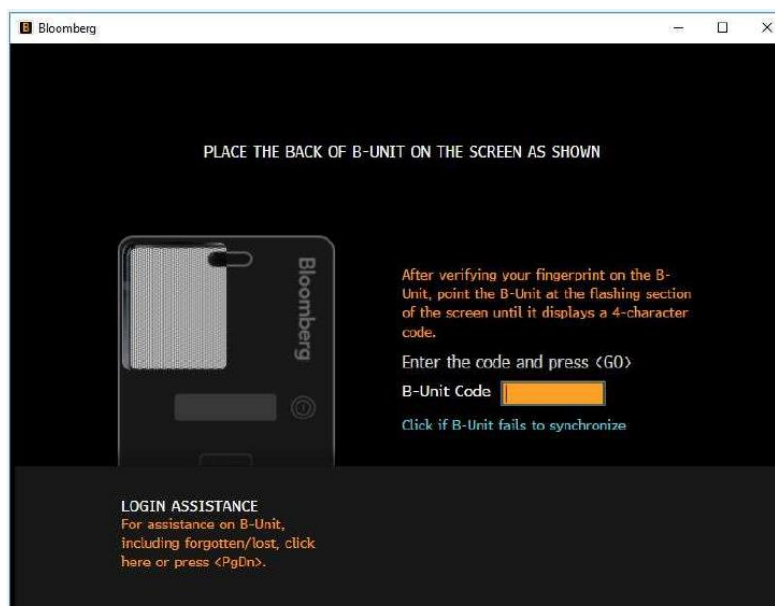
APOD Creation

How to Create a Serial Number(S/N) by Bloomberg Anywhere user

1. Launch the Bloomberg Professional Software.
2. Login with your Bloomberg Anywhere username and password.



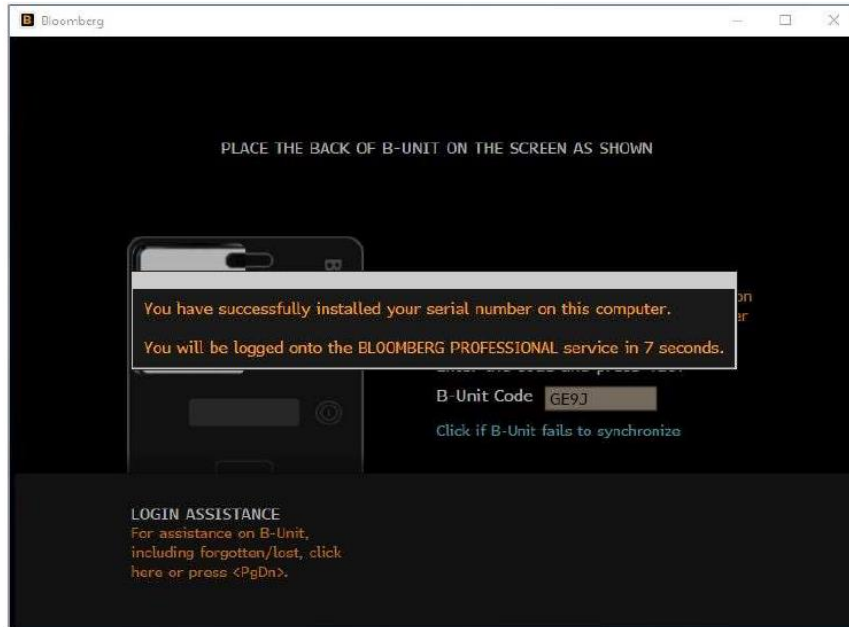
3. Verify on the B-Unit with Fingerprint.
4. Sync the B-Unit with the flashing screen.
5. Enter the B-Unit Code.



For 24 hour global customer support call +1 212 318 2000, +44 20 7330 7500, +65 6212 1000, +81 3 4565 8900 or press the HELP key twice on the Bloomberg Terminal®.

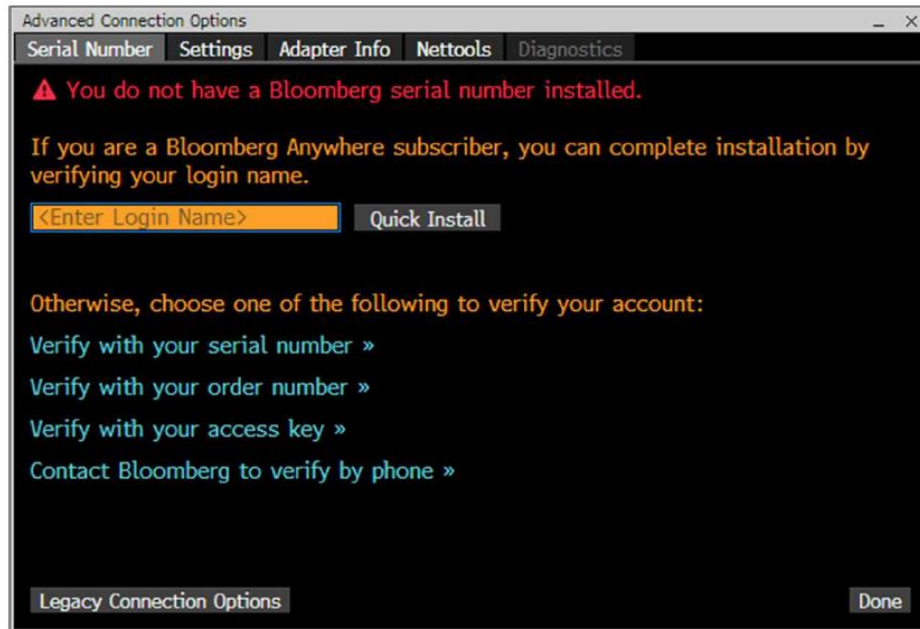
Bloomberg

6. Terminal will relaunch and the user will already be logged in.



Quick Install for Bloomberg Anywhere user

Alternatively, under **Advance Options**, IT Technicians or users can also enter their Bloomberg username to automatically create a serial number for the terminal under the correct customer number. The terminal software will relaunch and the user will be able to login using their Username, Password and biometric authentication. This feature requires an active connection to a Bloomberg Router.



BCHG

How to re-install a Serial Number for Open Terminal users

BCHG is supported if:

- Open/ Bloomberg Professional terminal.
- Terminal is configured to connect over a Bloomberg Router (Private IP).
- Terminal is not currently connected (user's logged out, application is closed).
- The S/N of the terminal has not been re-installed more than 3 times over the last 30 days.
- Terminal must have been connected to the Bloomberg router over the last 2 weeks, otherwise the S/N will fall from the Bloomberg router list.

If BCHG attempt does not pass any of the security checks above, the system will either display an error message or generate a service ticket for Bloomberg Help Desk for a callback.

Auto BCHG with Login Name

Automatic BCHG can be performed by existing Open Terminal users.

1. Open Terminal users may login with username and password.

Bloomberg

Log in or select Advanced Options to complete installation.

Login Name
 Password

Login

Select Language for Analytics and Communication Functions:

✓ English Español 한국어
 日本語 Português 简体中文
 Français Italiano 繁體中文
 Deutsch

To customize your News language experience type LANG <G0> after login.

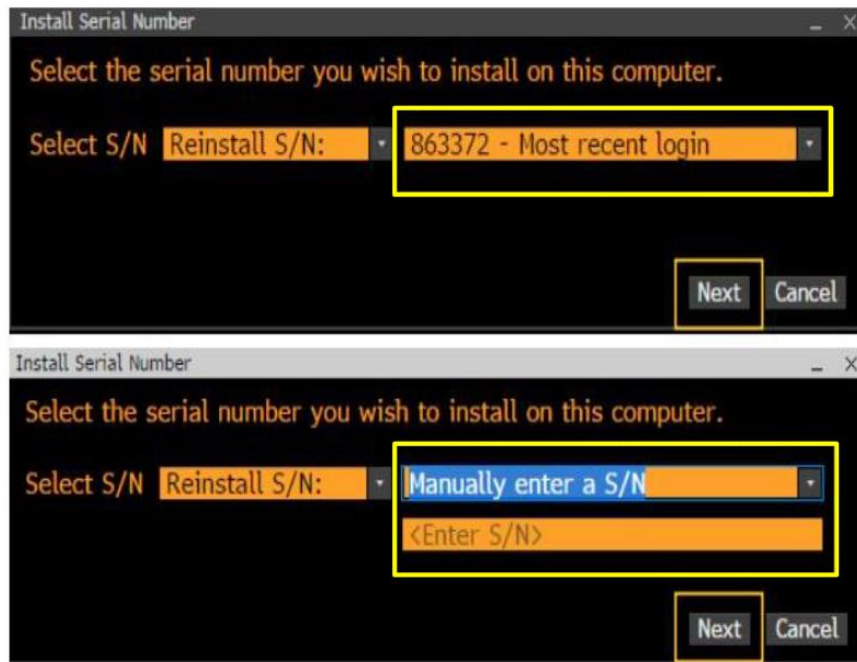
Contact Us
 Advanced Options

S/N -- | Version: 08 Mar 18

The BLOOMBERG PROFESSIONAL service and data products are owned and distributed by Bloomberg Finance L.P. and its subsidiaries (BFLP) except in Argentina, Bermuda, China, India, Japan, Korea (where Bloomberg L.P. and its subsidiaries (BLP) distribute these products). BLP provides BFLP with global marketing and operational support and service for these products. BFLP and BLP believe the information herein came from reliable sources, but do not guarantee its accuracy. No information or opinion herein constitutes a solicitation of the purchase or sale of securities or commodities.

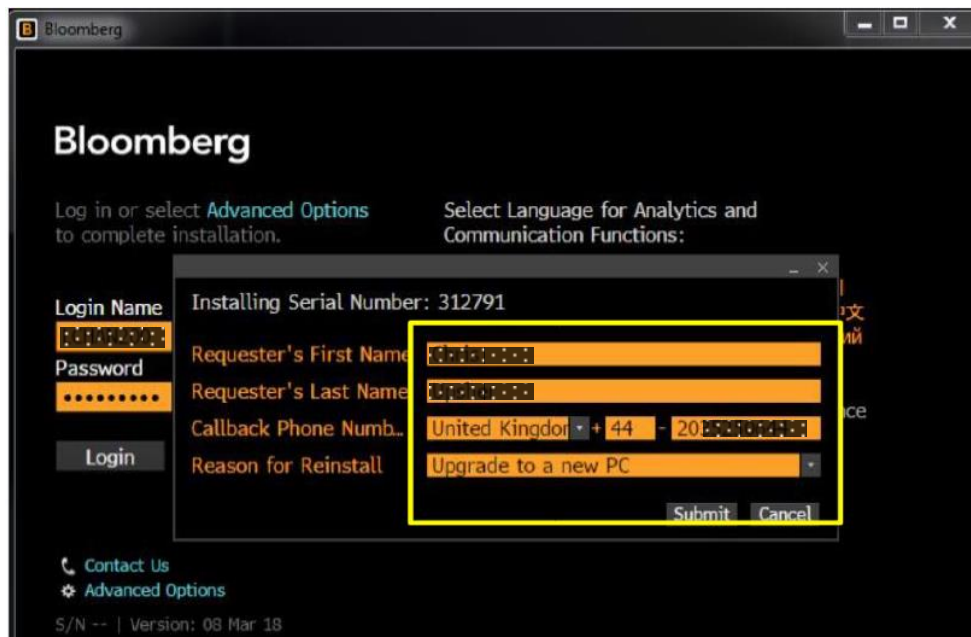
2. You will be given two options:

- Reinstall S/N** – to install the last Open Terminal S/N that the user has logged in.
- Manually enter a S/N** – to install a different Serial Number.



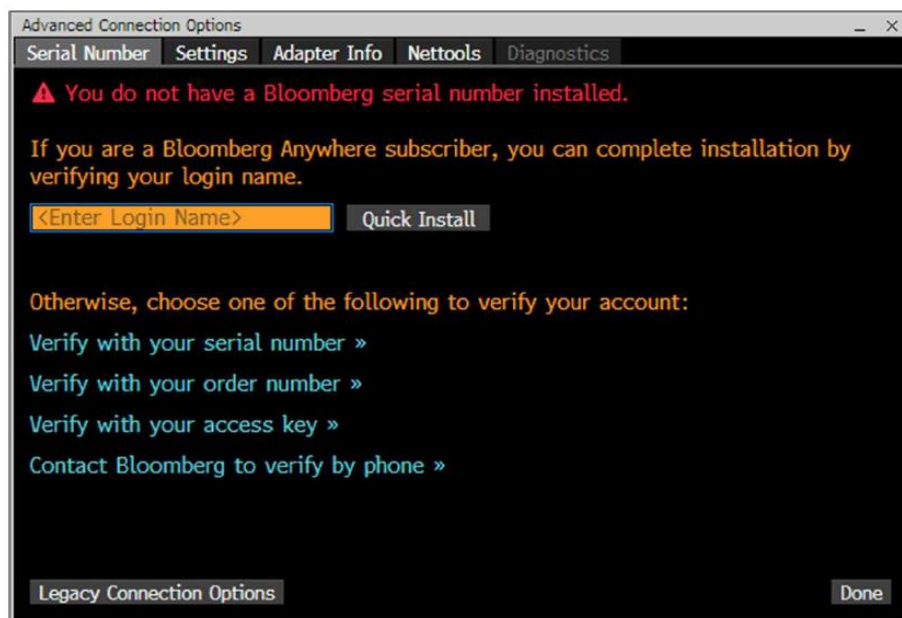
3. Enter contact details and reason for BCHG.

4. Click Submit, your serial number will be verified, software will relaunch and the user will be able to login.



Advanced Options

Advanced Options is available for IT technicians or users to install the Serial Number with other identifiers.



Verify with your serial number >>

This option can be used to automatically reinstall an Open Terminal serial number (BCHG) connecting over Bloomberg routers. For this option to work, ensure the terminal you are attempting to reinstall is not currently open in another computer.

Verify with your order number >>

This option can be used to install a new terminal by entering a Bloomberg order number.

Verify with your access key >>

You will be guided to this option by Bloomberg customer support whenever a terminal serial number needs to be manually installed or re-installed.

Contact Bloomberg to verify by phone >>

This option will provide you with the Bloomberg customer support phone numbers. Our support team will assist in installing or re-installing a Bloomberg terminal serial number.

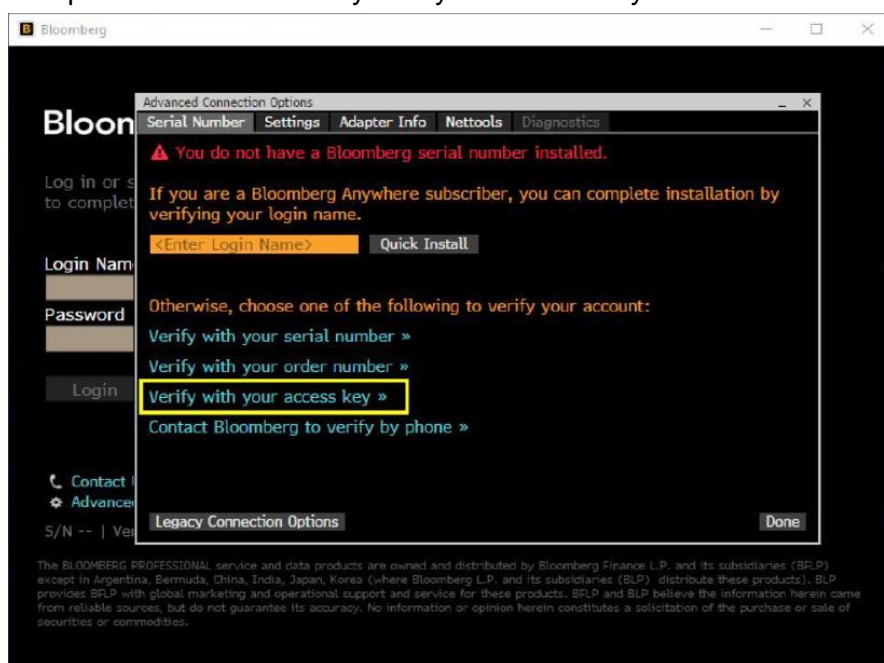
Legacy Connection Options >>

The legacy Connection Wizard remains available by clicking the legacy Connection Options button. The legacy connection wizard will launch on the Access Point tab to proceed with creating the APOD.

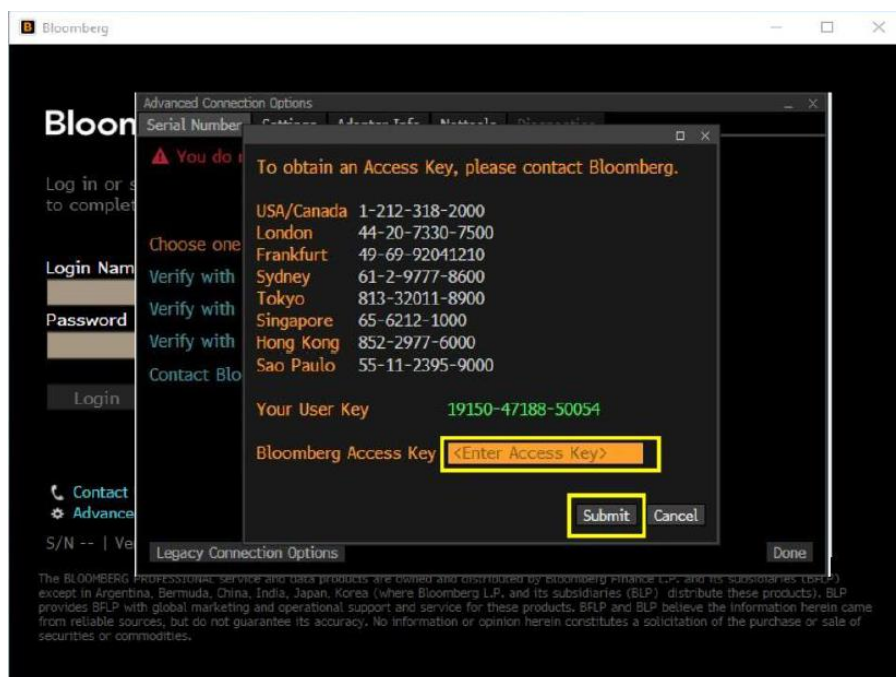
Manual BCHG

You can also contact Bloomberg Customer Support to perform a Manual BCHG. Bloomberg Customer Support will provide an Access Key when you need to reinstall an Open Terminal manually.

1. Click on Advanced Options and select verify with your access key.



2. Exchange User Key for Access Key.



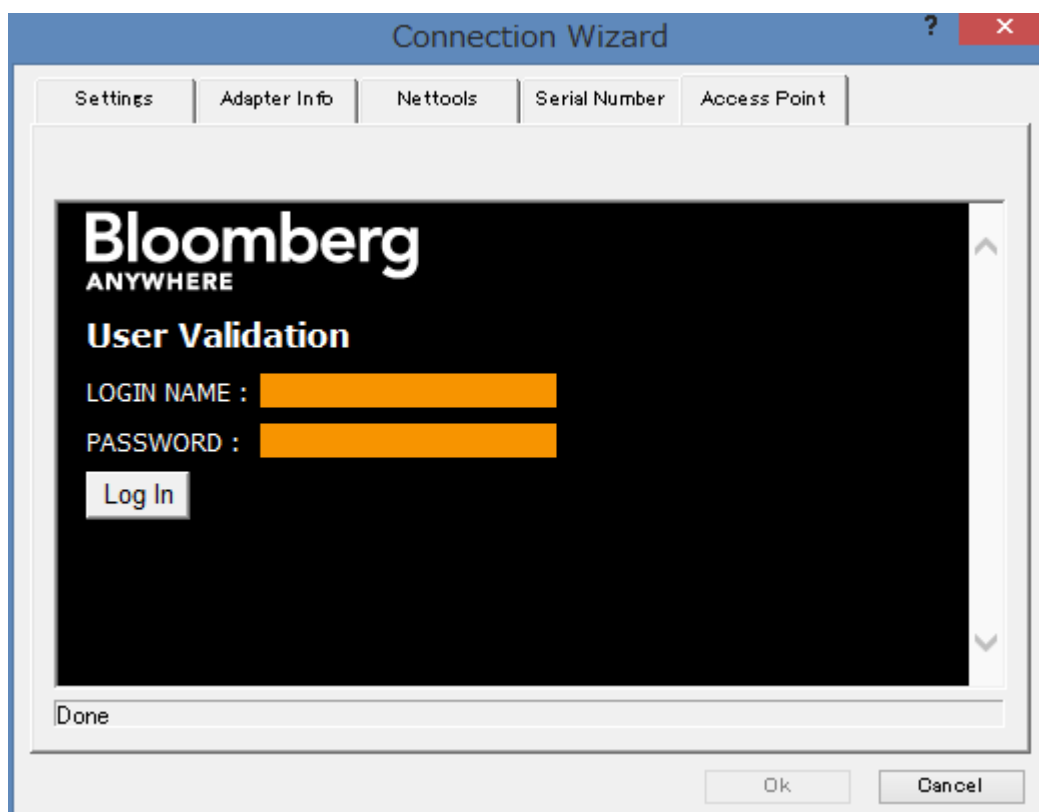
For 24 hour global customer support call +1 212 318 2000, +44 20 7330 7500, +65 6212 1000, +81 3 4565 8900 or press the HELP key twice on the Bloomberg Terminal®.

Bloomberg

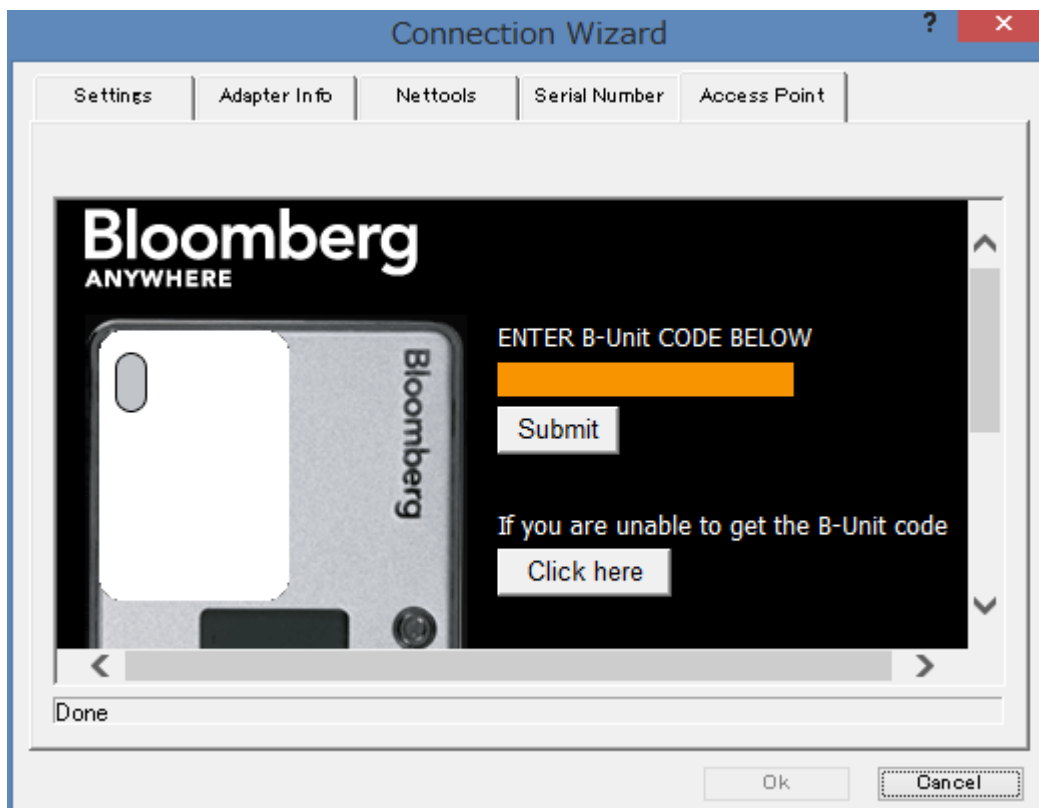
IV. Ref: Install the Bloomberg Serial Number (Legacy CONN Options)

Access Point on Demand (APOD) Creation Steps

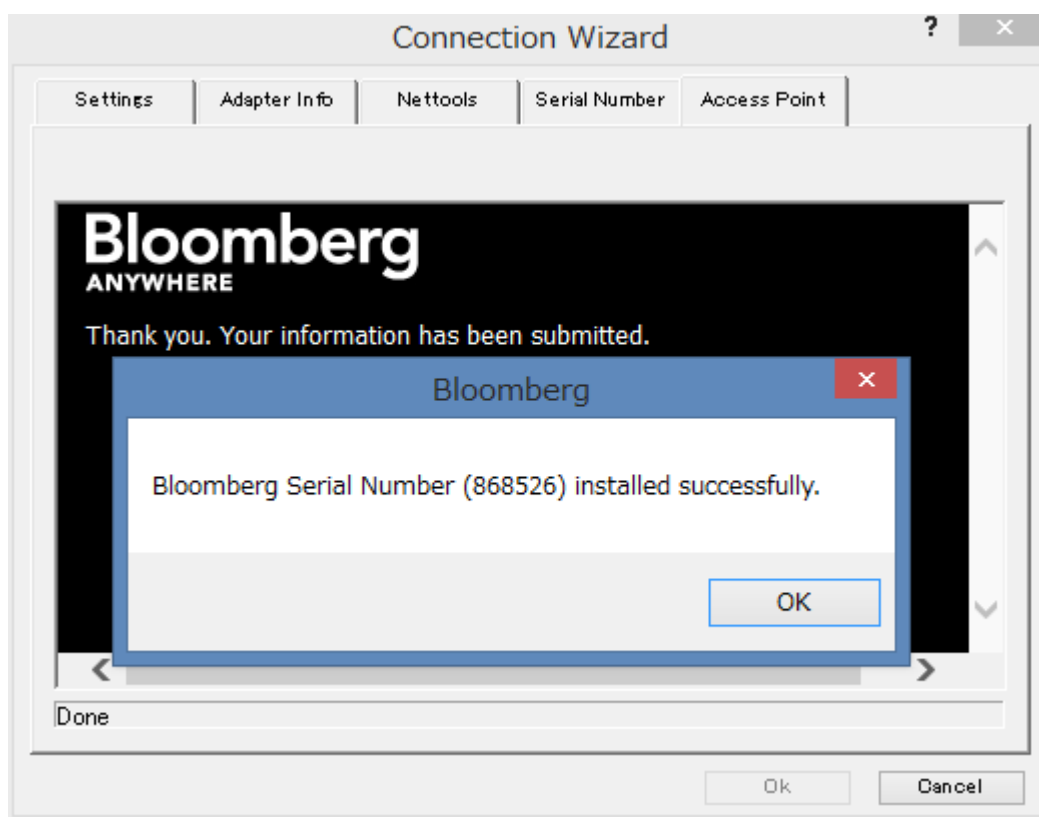
For clients with Internet connection, B-Unit authentication will be required after LOGIN NAME and PASSWORD prompt. For leased line clients, LOGIN NAME maybe required, or only the Submit button may be displayed. Below is an example of a customer with an Internet connection.



Launch the Connection Wizard by double clicking the Bloomberg icon on your Desktop. Select the Access Point tab, enter LOGIN NAME and PASSWORD. Click Log In.



The User is then prompted to perform a screen-sync and to enter the B-Unit code. Click Submit.



The above Bloomberg message will appear after the user's credentials have been validated. Click OK.

For 24 hour global customer support call +1 212 318 2000, +44 20 7330 7500, +65 6212 1000, +81 3 4565 8900 or press the HELP key twice on the Bloomberg Terminal®.

Bloomberg

Install new serial number

The screenshot shows the 'Connection Wizard' dialog box with the 'Serial Number' tab selected. The 'Install new serial number' radio button is chosen. The 'Your User Key' is 11755-23504-47019. The 'Enter Bloomberg Access Key' field is empty. A message states: 'If you do not already have a Bloomberg Access Key, please call:'. Below this is a table of contact numbers for various locations. At the bottom, a status bar reads 'Can not detect Bloomberg Serial Number (206)'. 'Ok' and 'Cancel' buttons are at the bottom right.

Set Bloomberg Serial Number	
Your User Key:	11755-23504-47019
Enter Bloomberg Access Key:	<input type="text"/>
If you do not already have a Bloomberg Access Key, please call:	
USA/Canada	1-212-318-2000
London	44-20-7330-7500
Frankfurt	49-69-92041210
Sydney	61-2-9777-8600
Tokyo	813-3201-8900
Singapore	65-6212-1000
Hong Kong	852-2977-6000
Sao Paulo	55-11-2395-9000

Can not detect Bloomberg Serial Number (206)

Launch the Connection Wizard by double clicking the Bloomberg icon on your Desktop. Select the Serial Number tab and click Install new serial number option. At this time, contact your local Bloomberg Installations representative for further instruction.

Reinstall serial number

The screenshot shows the 'Connection Wizard' window with the 'Serial Number' tab selected. The 'Reinstall serial number' option is chosen. The form contains the following fields and controls:

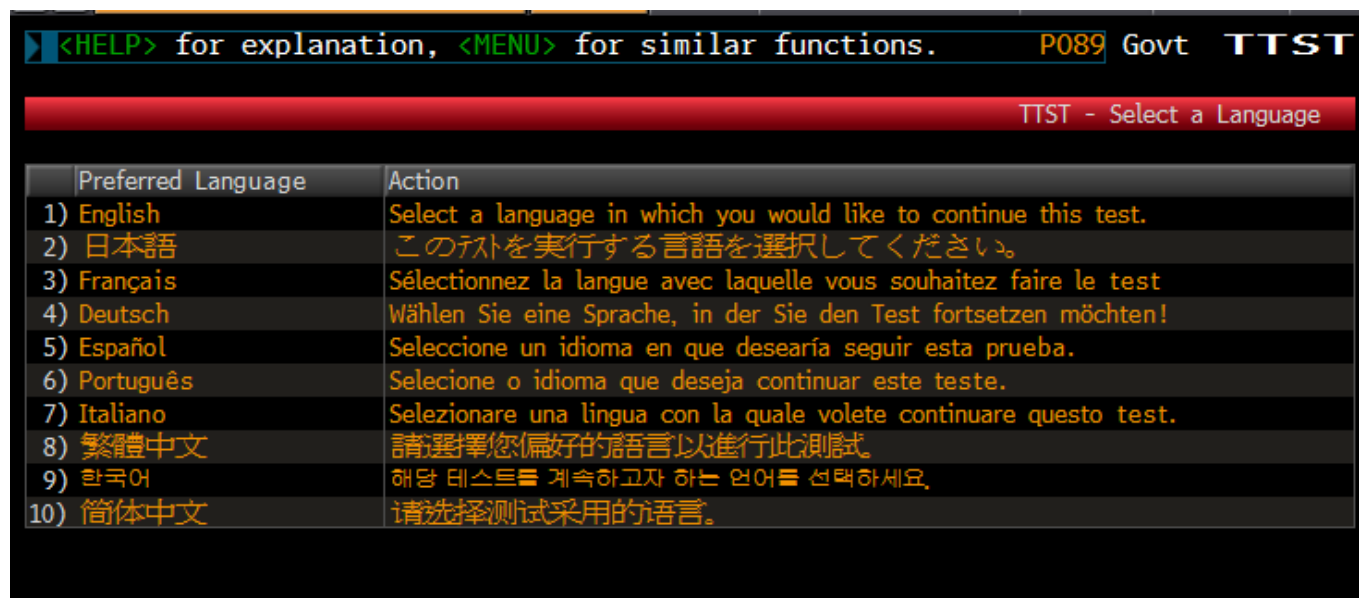
- Requester's First Name:** Text input field.
- Requester's Last Name:** Text input field.
- Call Back Phone Number:** Includes a dropdown menu set to 'United States', a '+' sign, a small box with '1', a '-' sign, and a text input field for the number.
- Serial:** Text input field.
- Reason for Auto Key-Change:** Dropdown menu with 'Please Select Reason' as the current selection.
- Buttons:** 'submit' and 'reset' buttons.
- Note:** A red text note at the bottom states: 'Note: This serial number may have access to Transactional Products. All Rules, Regulations, and Restrictions pertaining to Transactional Product functionality will continue to apply.'
- Footer:** 'Done' label, 'Ok' button, and 'Cancel' button.

Launch the Connection Wizard by double clicking the Bloomberg icon on your Desktop. Select the Serial Number tab and click Reinstall serial number option. Have the client enter their First Name, Last Name, Call Back Phone Number, Terminal Serial Number and select a reason for the Auto Key Change. Have the client click Submit. If all security checks pass, then the Auto Key Change will be successful.

V. Testing the Bloomberg Terminal

TOUR INSTALL

This program ensures that Bloomberg Terminal® is installed properly and have access to all standard functions. To run the program, type TOUR INSTALL from the 1-Bloomberg "Cancel" page and press <Enter>. The system will log in, using TOUR as the user name. After login has been completed, the following Select a Language.



TOUR INSTALL main menu page will appear with 8 options.



For 24 hour global customer support call +1 212 318 2000, +44 20 7330 7500, +65 6212 1000, +81 3 4565 8900 or press the HELP key twice on the Bloomberg Terminal®.

Bloomberg

TOUR INSTALL Menu Item Descriptions

1. Check Bloomberg Software versions
2. Set your Keyboard type
3. Check if PDF file is downloaded and displayed correctly
4. Check if audio/video is functioning properly using VID function
5. Check BBCOM/API DEMO is running properly and API data can be downloaded
6. Check if Smart Client is functioning properly using FFIP function
7. Check Bloomberg web site can be displayed properly on Bloomberg screen
8. Check if Bloomberg screen is printed out correctly

VI. Minimum File and Registry Rights for the Bloomberg Application

For minimum Windows file and registry rights required for running the Bloomberg Terminal® and receiving automatic updates, please access the "**Minimum File & Registry Rights**" document available at <https://www.bloomberg.com/professional/support/documentation/>