

Bloomberg

Bloomberg Software Installation Manual **English**

11 April 2017
Version: 9.7

| | |
|--|-----------|
| Download the Bloomberg Software | 2 |
| Install Bloomberg Serial Number | 8 |
| Testing the Bloomberg Terminal..... | 12 |
| Minimum File and Registry Rights for the Bloomberg Application..... | 14 |

Download the Bloomberg Software

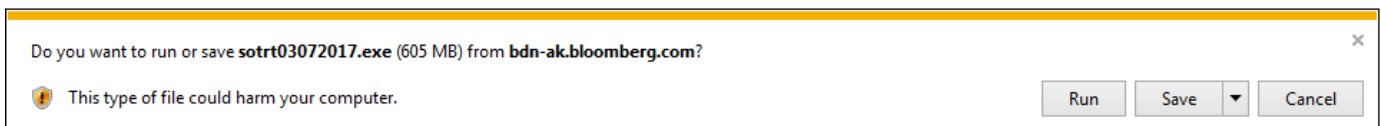
From Internet Explorer or other Standard WEB Browser, enter the following URL in the Address field to download the complete Bloomberg installation package.

<http://www.bloombergsoftware.com>

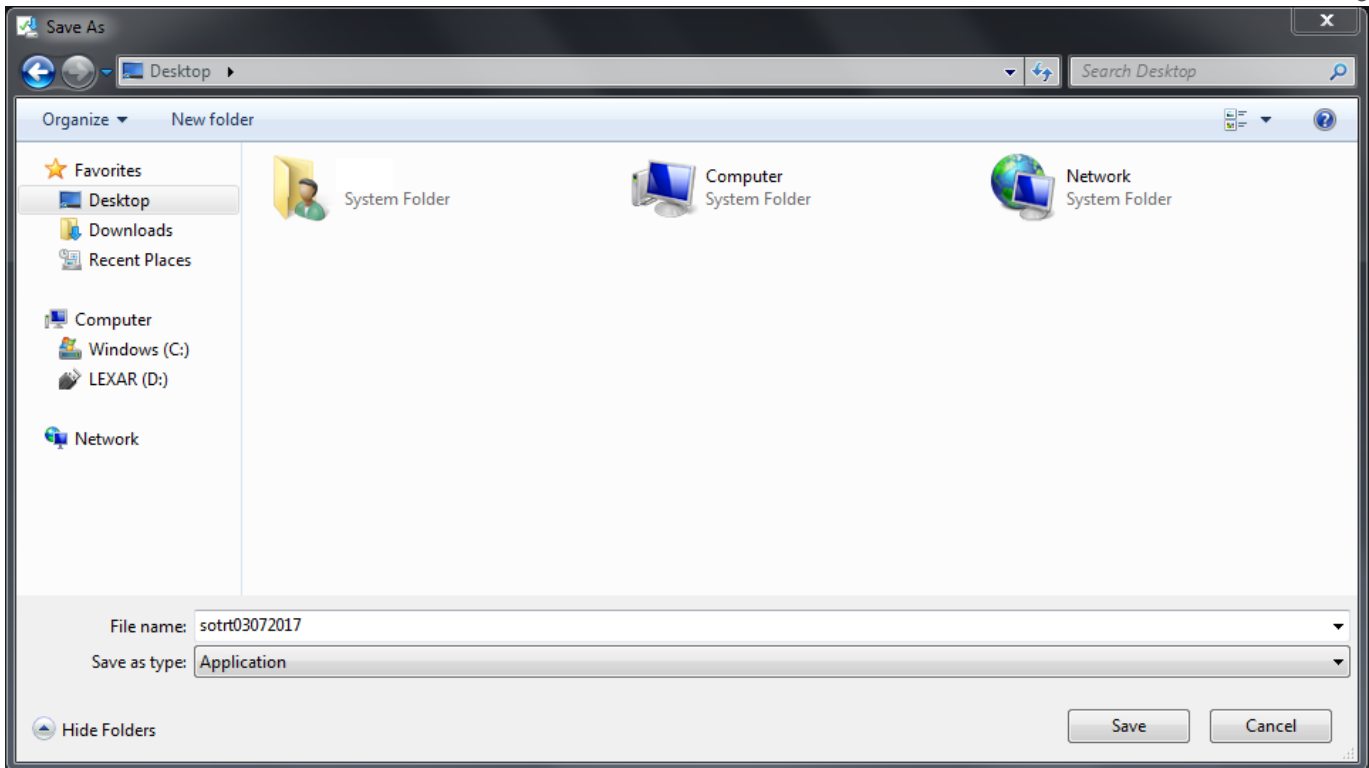
Bloomberg clients can download software, including full and upgrade installations, API components, utilities, various fonts and drivers, PriceLink and Excel Add-ins. [Subscribe to the RSS feed for software updates.](#)

| Bloomberg Professional | | | |
|---|-------------------------------|-------------|-------------------|
| Bloomberg Terminal - New Installation ⓘ | Release notes | Mar 7, 2017 | ↓ |
| Upgrade Bloomberg Terminal (All Components) ⓘ | Release notes | Mar 7, 2017 | ↓ |
| Upgrade Bloomberg Terminal (Terminal Software Only) ⓘ | Release notes | Mar 7, 2017 | ↓ |
| Office Tools | | | |

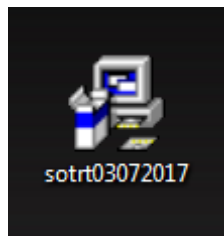
Click **Terminal - New Installation** to perform a Full Installation.



Select **Save – Save as** to save the program to your desktop.

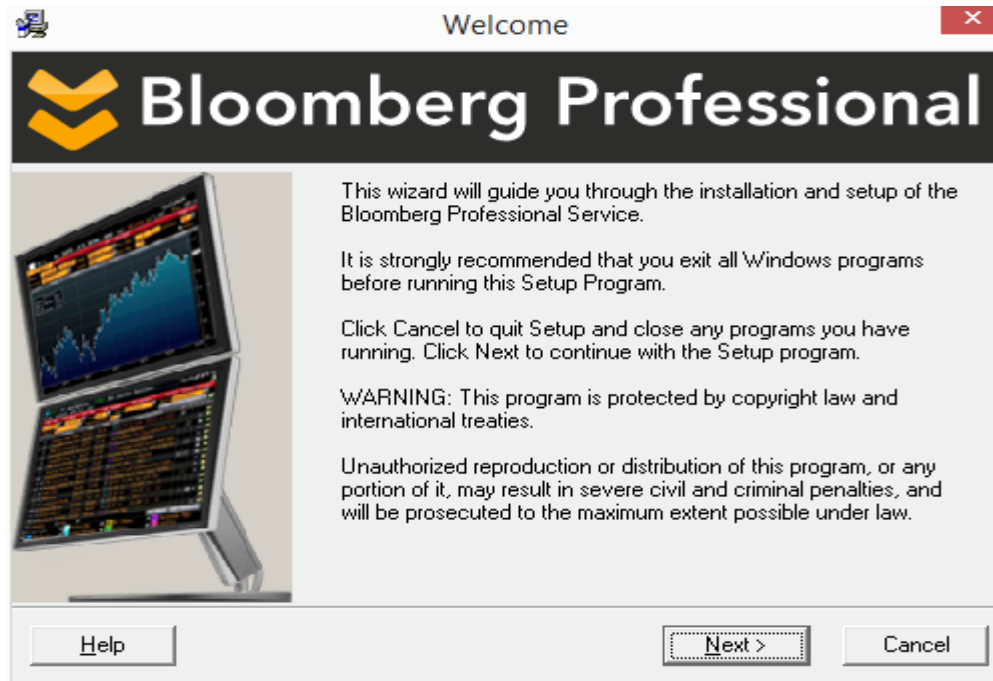


Click **Save**.

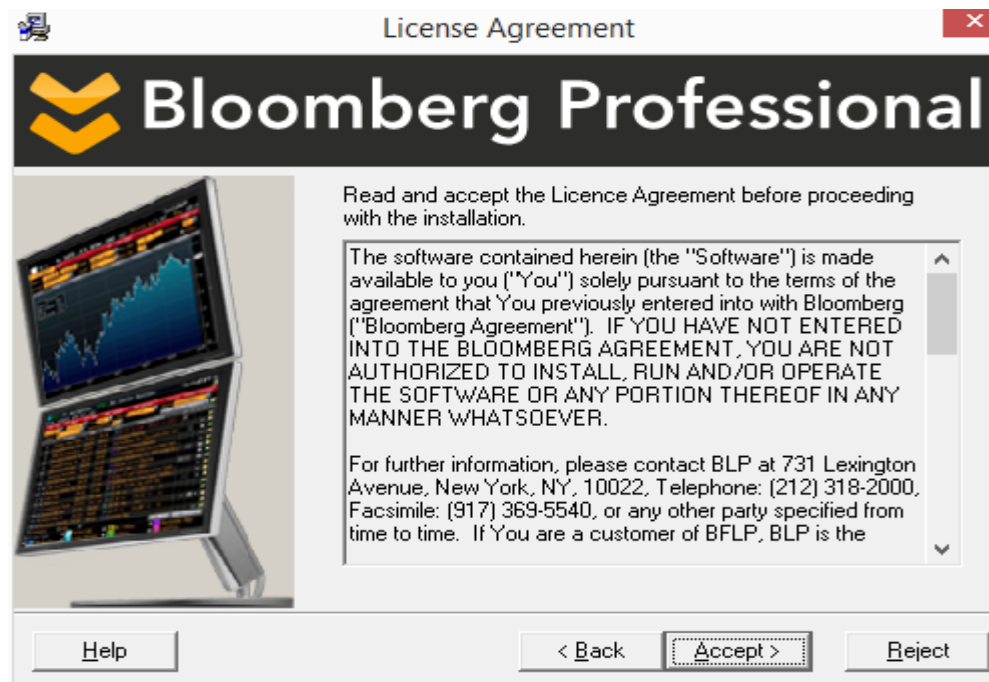


After the software download is complete, double-click the icon located on your desktop. This will execute the Wise Installation Wizard for the Bloomberg Professional® service.

NOTE: Be sure to install the Bloomberg Professional® software under a login with Administrator rights.

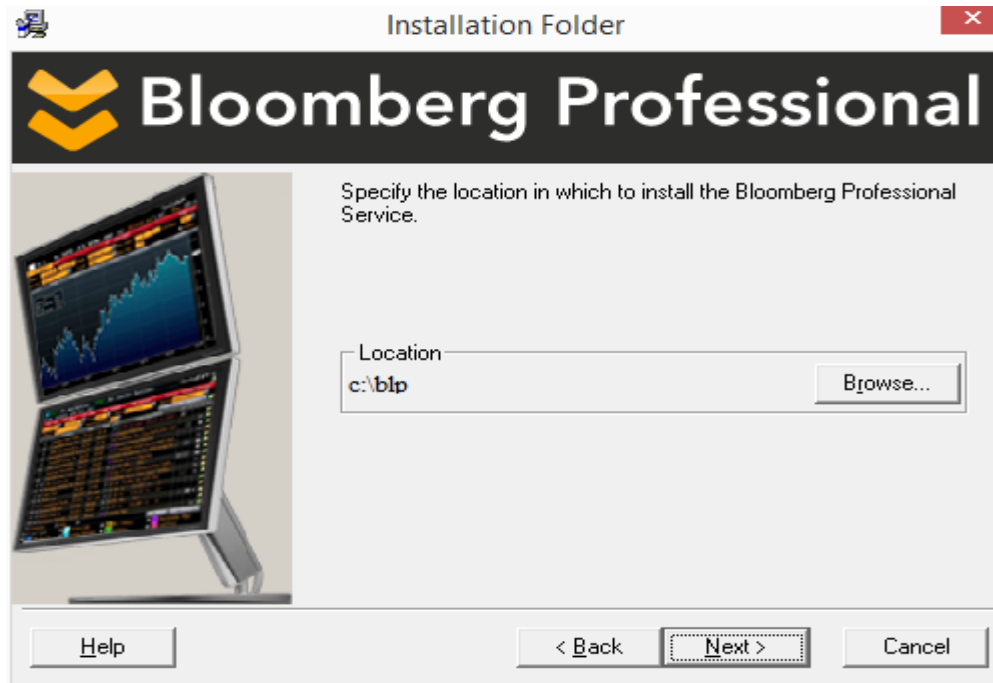


Please click the **Next** button to continue or **Cancel** to exit the installation.



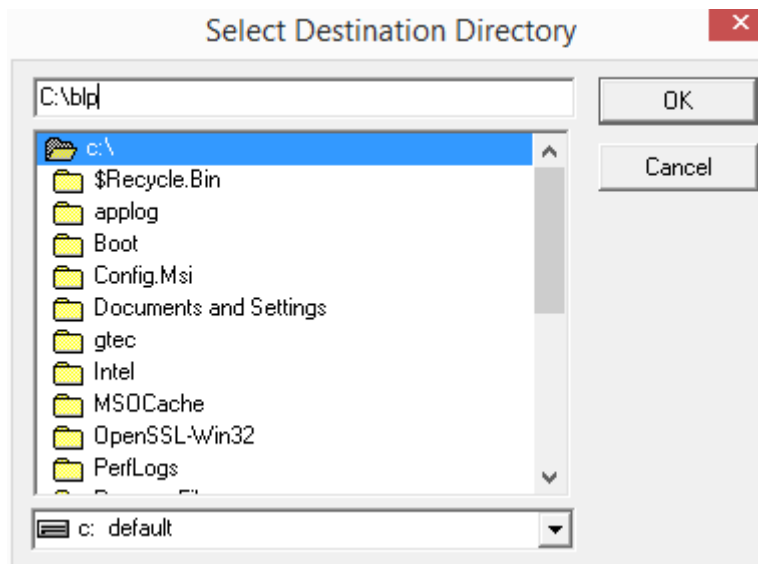
Please review the License Agreement and confirm you agree to it by clicking the **Accept** button. Should you not wish to accept these terms, please click the **Reject** button and the installation will be cancelled.





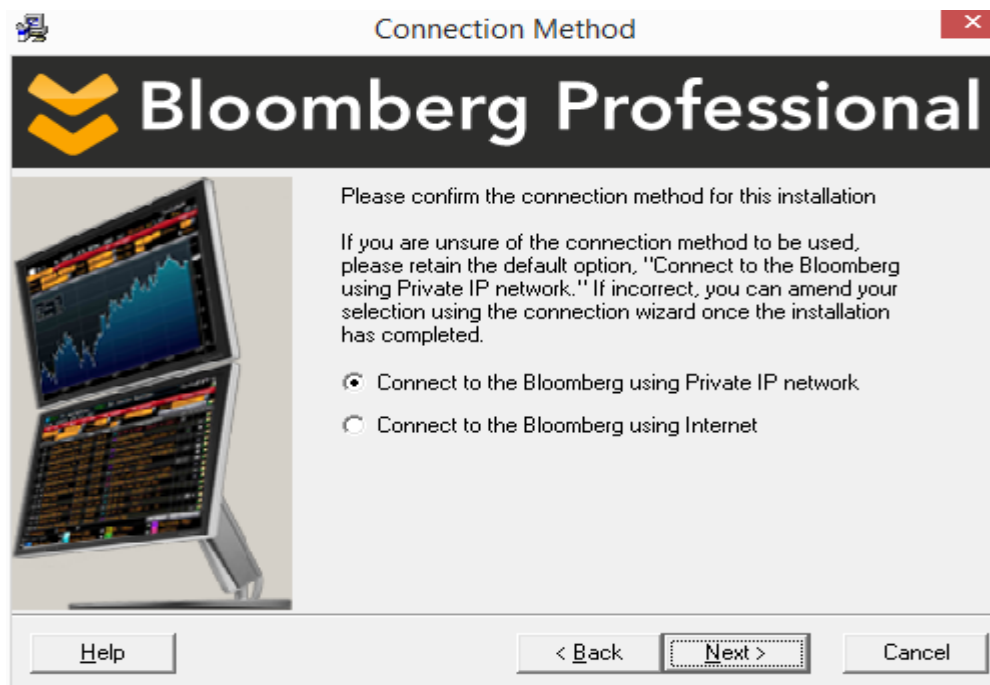
The default location for the installation of the Bloomberg Professional® Service software is automatically populated. Click on **N**ext to accept this location and continue.

If you need to change the location, click on the **B**rowse button to open a dialog box where you can enter or navigate to the desired location. Click on OK to return. Click on **N**ext to confirm new location and continue.



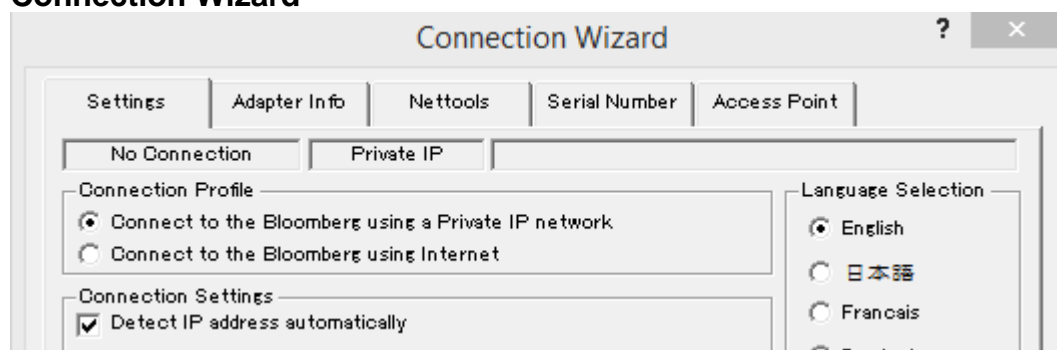
Note: If the installer detects a previously installed version, the existing location will be respected and this screen will not be displayed.

Please click  button in the Wizard if you need more assistance.



This screen will configure the desired connection method for your Bloomberg Professional® Service. The default setting is “Connect to the Bloomberg using Private IP network” as this is the most common connection type and should be selected if you are unsure which method you should be using. In any case, this setting can be changed after the installation is complete.

- **Connect to the Bloomberg using Private IP Network**
This option refers to a dedicated leased line connection via Bloomberg supplied access router(s).
- **Connect to the Bloomberg using Internet**
This option is typically used for direct Internet access to Bloomberg, or when Private IP is unavailable.
- **Connection Wizard**

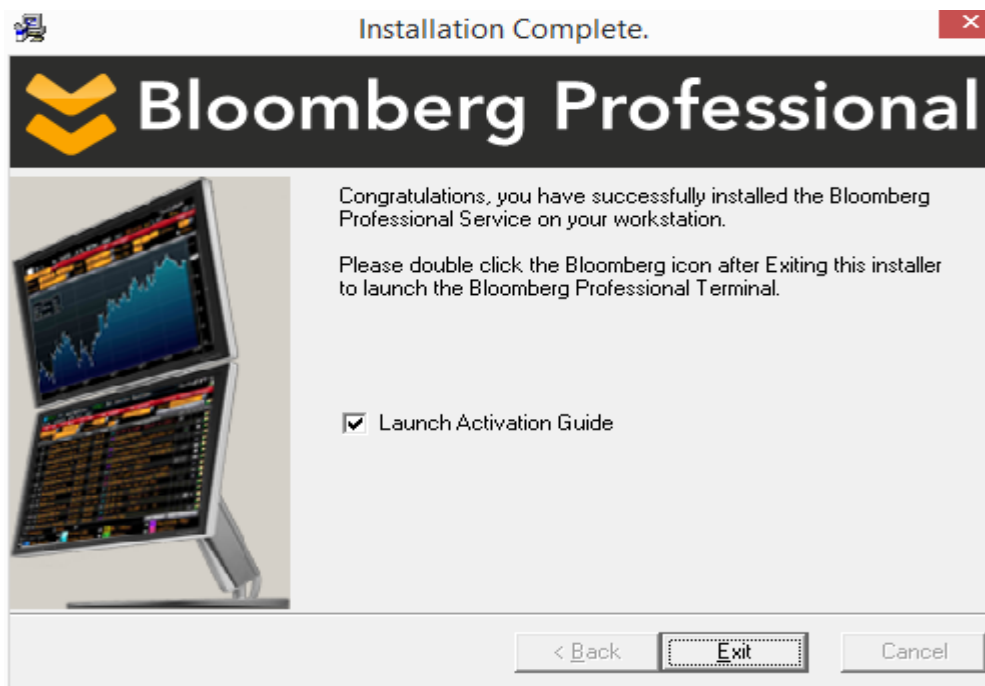


The Connection Wizard is accessed by entering **CONN<GO>** on the Bloomberg Terminal or clicking on the red **CONN** button on the toolbar.

Please click  button in the Wizard if you need more assistance.



The preparation stage is complete - we are now ready install the software. Click on **N**ext to proceed, or if you need to change any of the choices you have already made, click **B**ack to review.



The figure above shows the installation process is now complete. After clicking Finish, you will now be able to launch Bloomberg by double clicking the Bloomberg icon on your Desktop, or by going to Start – Programs – Bloomberg.

Note: Launch Activation Guide - You can refer the **Activation Guide** after clicking **E**xit. Otherwise, uncheck the checkbox. Activation Guide will be launched to assist in activating of your terminal.



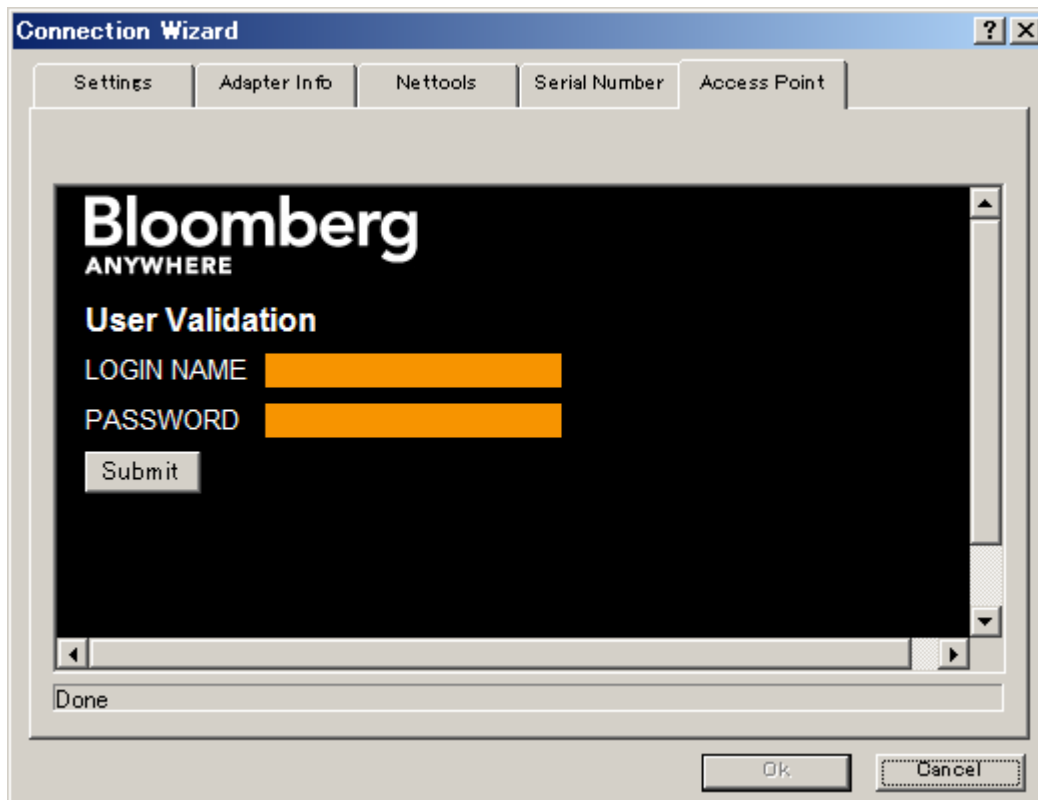
For 24 hour global customer support call +1 212 318 2000, +44 20 7330 7500, +65 6212 1000, +81 3 3201 8900 or press the HELP key twice on the BLOOMBERG PROFESSIONAL® service. **Bloomberg**

Install Bloomberg Serial Number

There are three ways to install Bloomberg Serial Number.

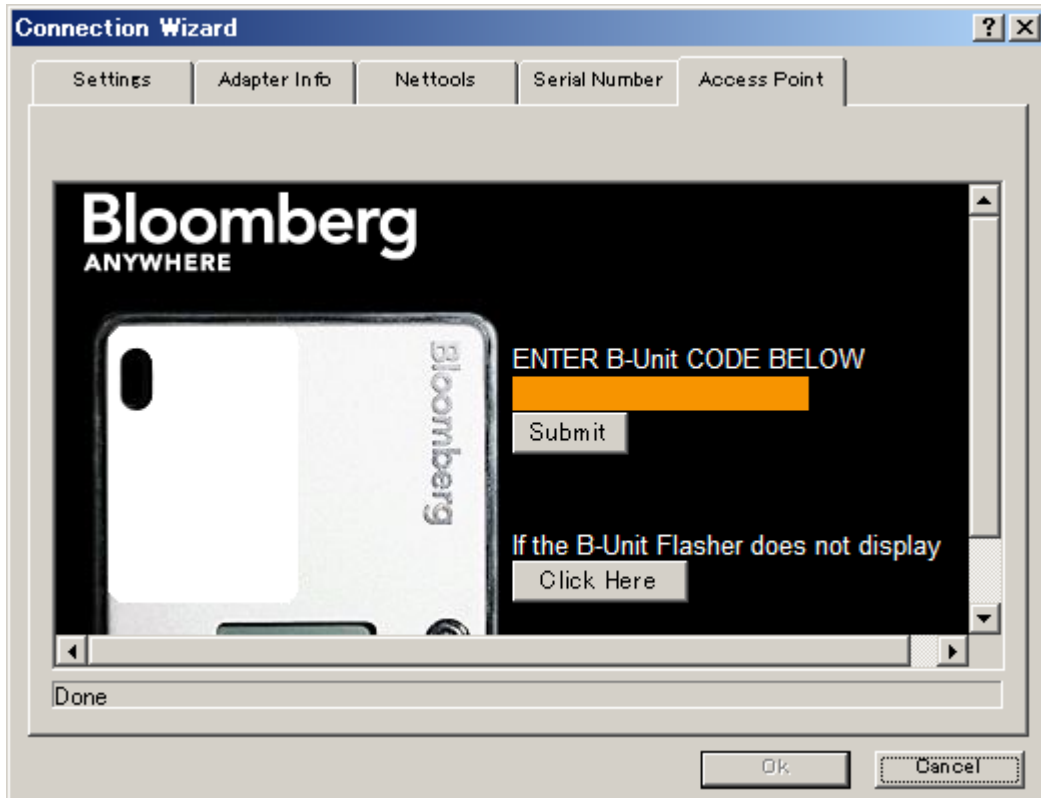
- **Access Point On Demand (APOD)** for Bloomberg Anywhere users.
Access Point On Demand (APOD) has been designed to allow a user to create a configured Bloomberg Access Point, without interaction with a Bloomberg representative.
- **Install new serial number** for Terminal Based License users.
Install new serial number option is for Terminal Based License users (Non-Bloomberg Anywhere users).
- **Reinstall serial number** for Terminal Based License users.
Install new serial number option is for Terminal Based License users (Non-Bloomberg Anywhere users).

Access Point on Demand (APOD) Creation Steps

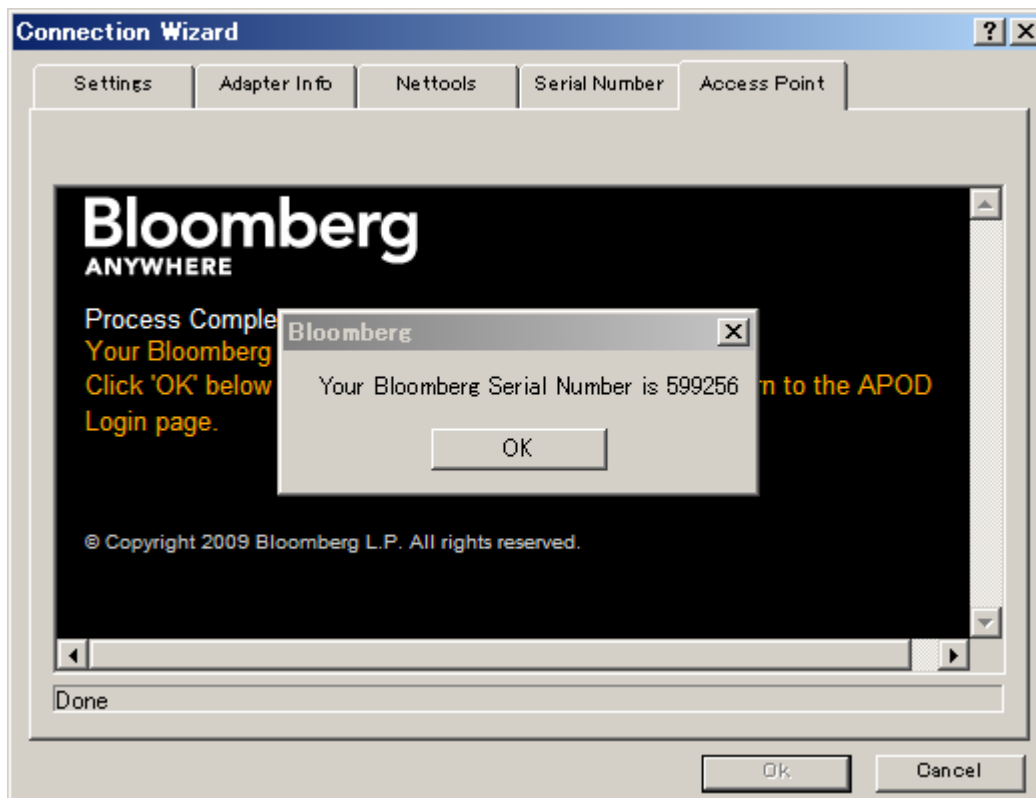


Step 1 - Launch the Connection Wizard by double clicking the Bloomberg icon on your Desktop, or by going to Start – Programs – Bloomberg. Select the Access Point tab, enter LOGIN NAME and PASSWORD. Click Submit.

If connection via Private IP has been established proceed to Step 3. If connection via Internet has been established proceed to Step 2.



Step 2 - The User is then prompted to perform a screen-sync and to enter the B-Unit code. Click Submit.

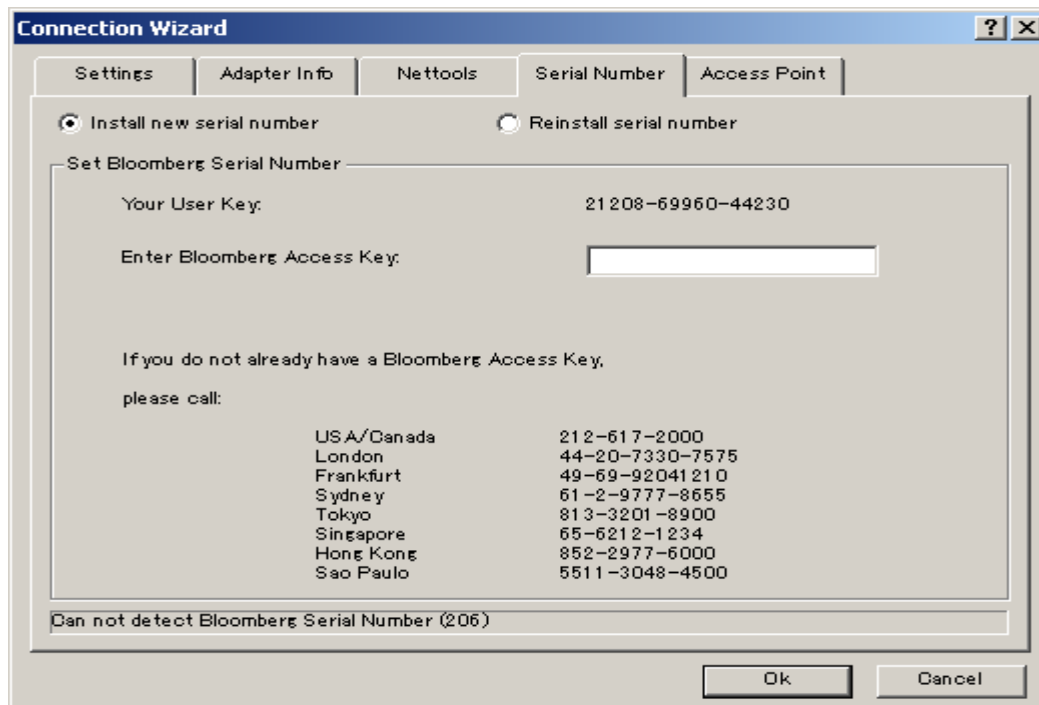


Step 3 - The above Bloomberg message will appear after the user's credentials have been validated. Click OK.



Step 4 - Click OK. At this point you will be required to log into Bloomberg as normal using your Login name, password and B-Unit.

Install new serial number



Launch the Connection Wizard by double clicking the Bloomberg icon on your Desktop, or by going to Start – Programs – Bloomberg. Select the Serial Number tab and click Install new serial number option. At this time, contact your local Bloomberg Installations representative for further instruction.

For 24 hour global customer support call +1 212 318 2000, +44 20 7330 7500, +65 6212 1000, +81 3 3201 8900 or press the HELP key twice on the BLOOMBERG PROFESSIONAL® service. **Bloomberg**

Reinstall serial number

The screenshot shows the 'Connection Wizard' window with the 'Serial Number' tab selected. The 'Reinstall serial number' radio button is chosen. The form contains the following fields:

- Requester's First Name:** [Redacted]
- Requester's Last Name:** [Redacted]
- Call Back Phone #:** United States (dropdown), + 1 (country code), [Redacted]
- Serial #:** [Redacted]
- Reason for Auto Key-Change:** Please Select Reason (dropdown)

Buttons: Submit, Reset

Note: This serial number may have access to Transactional Products. All Rules, Regulations, and Restrictions pertaining to Transactional Product functionality will continue to apply.

Done

Buttons: Ok, Cancel

Launch the Connection Wizard by double clicking the Bloomberg icon on your Desktop, or by going to Start – Programs – Bloomberg. Select the Serial Number tab and click Reinstall serial number option. Have the client enter their First Name, Last Name, Call Back Phone Number, Terminal Serial Number and select a reason for the Auto Key Change. Have the client click Submit. If all security checks pass, then the Auto Key Change will be successful.

Testing the Bloomberg Terminal

TOUR INSTALL

This program ensures that BLOOMBERG PROFESSIONAL terminals are installed properly and have access to all standard functions. To run the program, type TOUR INSTALL from the **1-Bloomberg** "Cancel" page and press <Enter>. The system will log in, using TOUR as the user name. After login has been completed, the following **Select a Language** and **TOUR INSTALL** main menu page will appear with 8 options:

<HELP> for explanation, <MENU> for similar functions. P089 Govt TTST

TTST - Select a Language

| Preferred Language | Action |
|--------------------|--|
| 1) English | Select a language in which you would like to continue this test. |
| 2) 日本語 | このテストを実行する言語を選択してください。 |
| 3) Français | Sélectionnez la langue avec laquelle vous souhaitez faire le test |
| 4) Deutsch | Wählen Sie eine Sprache, in der Sie den Test fortsetzen möchten! |
| 5) Español | Seleccione un idioma en que desearía seguir esta prueba. |
| 6) Português | Selecione o idioma que deseja continuar este teste. |
| 7) Italiano | Selezionare una lingua con la quale volete continuare questo test. |
| 8) 繁體中文 | 請選擇您偏好的語言以進行此測試 |
| 9) 한국어 | 해당 테스트를 계속하고자 하는 언어를 선택하세요. |
| 10) 简体中文 | 请选择测试采用的语言。 |

<HELP> for explanation, <MENU> for similar functions. P145 Govt TTST

<MENU> to return

TTST - Terminal Test

The following series of tests ensure that the Bloomberg Professional terminal is installed and functioning properly. Any functions required during the testing process will be run on the secondary screen. Please select a test below to continue. Hit <MENU> at any time to return to this screen.

| Launch Test | Test Status |
|---------------------------|---------------|
| 1) Software Update | Not Performed |
| 2) Keyboard Test | Not Performed |
| 3) PDF Download | Not Performed |
| 4) Bloomberg Video/Audio | Not Performed |
| 5) Bloomberg API | Not Performed |
| 6) Bloomberg Smart Client | Not Performed |
| 7) Web Access | Not Performed |
| 8) Printing | Not Performed |

9) [Contact our Global Customer Support](#)
Click here if you need additional assistance for the preceding tests

TOUR INSTALL Menu Item Descriptions

1. Check Bloomberg Software versions
2. Set your Keyboard type
3. Check if PDF file is downloaded and displayed correctly
4. Check if audio/video is functioning properly using VID function
5. Check BBCOM/API DEMO is running properly and API data can be downloaded
6. Check if Smart Client is functioning properly using FFIP function
7. Check Bloomberg web site can be displayed properly on Bloomberg screen
8. Check if Bloomberg screen is printed out correctly

Minimum File and Registry Rights for the Bloomberg Application

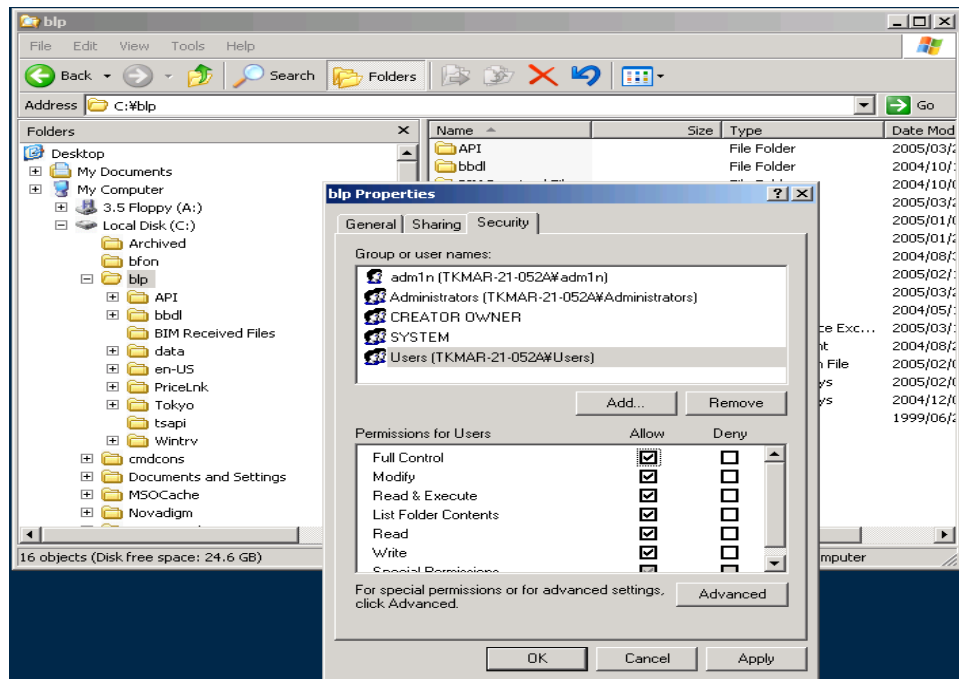
Bloomberg software is upgraded automatically every month. Please keep in mind to set up the permissions for the files/folders and registry in order to prevent any problem with the auto-upgrade, by taking the following steps:

Log into Windows as an Administrator and install the Bloomberg software.

Set up full-access to Bloomberg folder/sub folders permission for Windows User who uses Bloomberg. Bloomberg is installed under c:\bplp by default.

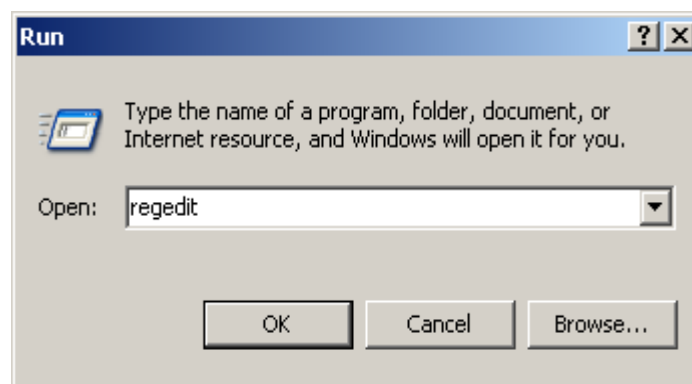
Open Windows Explorer. Right-click on Bloomberg folder and go to [Properties].

On Security Tab, choose appropriate Group or User name and click 'Full Control' for Permissions.

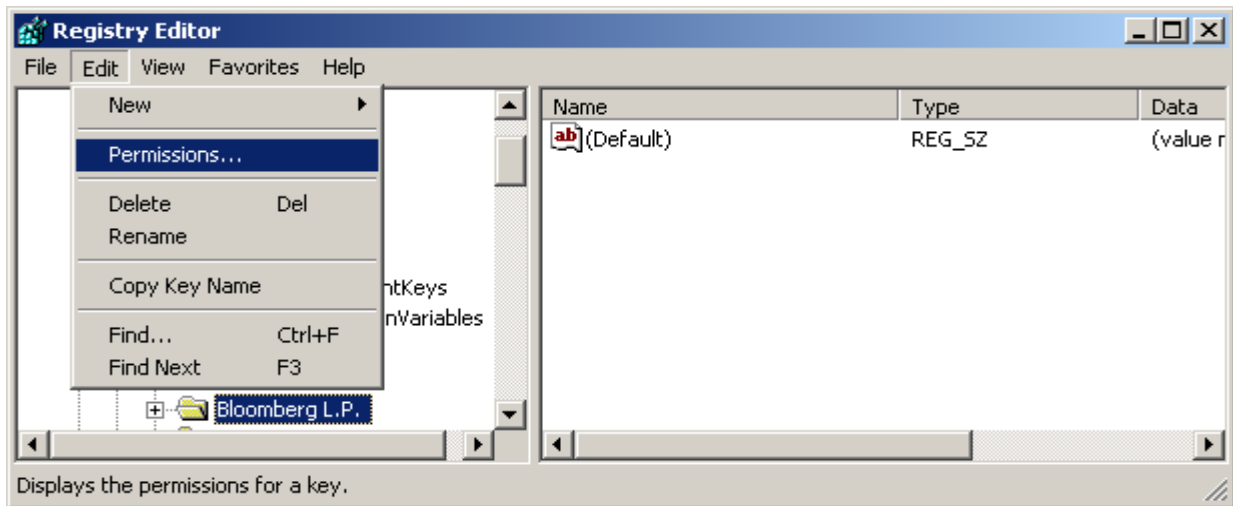


Set up full-access or the following necessary keys to Bloomberg software for appropriate group/user. Necessary Keys: [Query Value], [Set Value], [Create Subkey], [Enumerate Subkeys], [Delete], [Read Control], [Notify].

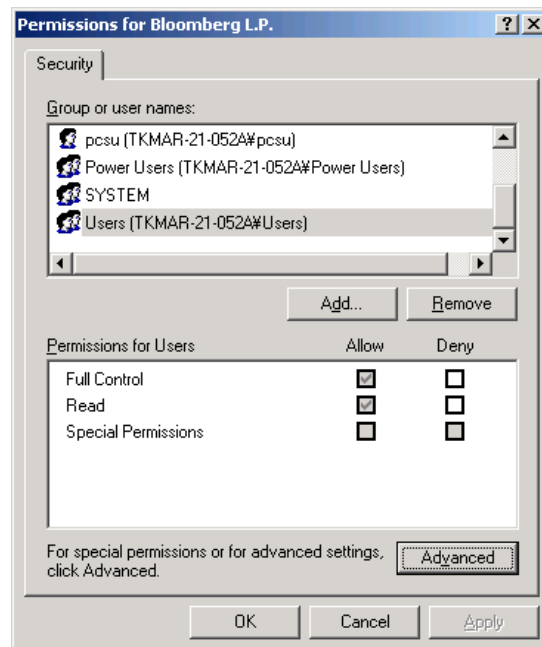
Click [Start] and go to [Run...]. Type in **regedit** to open Registry Editor.



Click on “HKEY_LOCAL_MACHINE\SOFTWARE\Bloomberg L.P.” for 32-bit Operating System, Click on “HKEY_LOCAL_MACHINE\SOFTWARE\Wow6432Node\Bloomberg L.P.” for 64-bit Operating System, and go to [Permissions...] located under the Edit menu as depicted below.



Choose appropriate Group or User name and click 'Full Control' for Permissions or click 'Advanced' to set up minimum keys.



NOTE: In case the Bloomberg user is not a Windows Administrator or Power User, the following keys need to be set up the same. Repeat steps 5 and 6 for the following keys.

◆ HKEY_LOCAL_MACHINE\SOFTWARE\Microsoft\Windows\CurrentVersion\Uninstall

Users can have the rights listed below instead of Uninstall.

◆ HKEY_LOCAL_MACHINE\SOFTWARE\Microsoft\Windows\CurrentVersion\Uninstall\Bloomberg Office Tools (For 32-bit Operating System)

◆ HKEY_LOCAL_MACHINE\SOFTWARE\Wow6432Node\Microsoft\Windows\CurrentVersion\Uninstall\Bloomberg Office Tools (For 64-bit Operating System)