



INSTALLATION & REFERENCE GUIDE

A Bloomberg Professional Service Offering

BLOOMBERG KEYBOARD 4

Bloomberg

CONTENTS

02 KEYBOARD TECHNICAL INFORMATION

03 BLOOMBERG KEYBOARD SETUP

**03 BLOOMBERG PROFESSIONAL
SERVICE CONFIGURATION**

03 KEYBOARD INSTALLATION

03 KEYBOARD INSTALLATION WITH KVM SUPPORT

04 BLOOMBERG BSAT ENROLLMENT

05 KEYBOARD FEATURES

05 KEYBOARD SPECIFICATIONS

**06 TIPS FOR SAFE AND EFFECTIVE USE OF
YOUR BLOOMBERG KEYBOARD**

06 RETURNING THE FORMER KEYBOARD

06 APPROVALS

KEYBOARD TECHNICAL INFORMATION

DESCRIPTION

The Bloomberg Keyboard 4 is a standard PC keyboard that has been designed for use with the Bloomberg Professional® service.

The Bloomberg Keyboard 4:

- » Can be used with all standard PC applications.
- » Is equipped with keys that have been specially designed for use with the Bloomberg Professional service.
- » Uses standard Windows USB drivers.
- » Serves as a USB audio device for Bloomberg and PC multimedia content.
- » Provides external speakers and microphones in addition to headphone and microphone jacks¹.
- » Supports both split jack style and integrated speaker/microphone headsets.
- » Features a BSAT (Bloomberg Secure Access Technology) device for secure login to the Bloomberg Professional service.
- » Features support for USB KVM switchboxes via a secondary USB port.

SYSTEM REQUIREMENTS	SOFTWARE REQUIREMENTS	POWER REQUIREMENTS
Windows XP Windows Vista Windows 7 Windows 8	Bloomberg Professional service, September 2013 version or later	The keyboard is powered via USB and must be plugged directly into a PC USB port, a self-powered USB hub or a self-powered USB KVM switchbox. Self-powered devices are powered by their own AC adapters. The keyboard cannot be powered by a bus-powered USB hub or bus-powered USB KVM switchbox.

¹Speaker audio levels are internally limited to levels below what is available from the USB power source, which may cause volume clipping and momentary peak levels

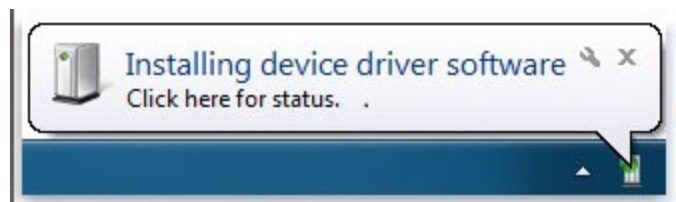
BLOOMBERG KEYBOARD SETUP

BLOOMBERG PROFESSIONAL SERVICE CONFIGURATION

- » Download and Install the Bloomberg Professional Application from bloombergssoftware.com.
- » Launch the Bloomberg Professional service.
- » Type Alt-D to bring up the Terminal Defaults menu. You do not need to be logged in to adjust this setting.
- » Select the General Tab.
- » Select Bloomberg Keyboard option under the Keyboard type dropdown menu.
- » Click OK.

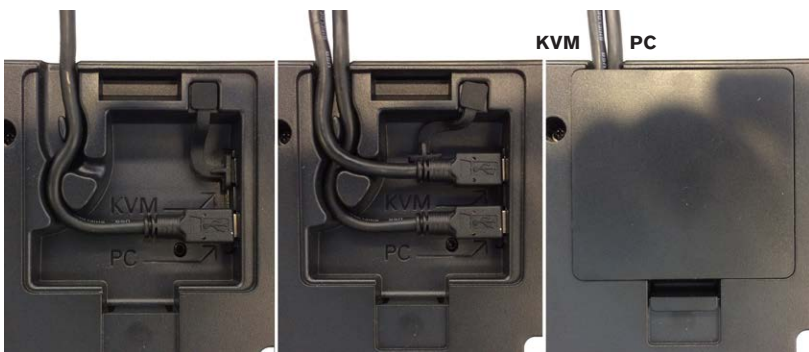
KEYBOARD INSTALLATION

- » Connect the USB Cable to an available PC or self-powered hub USB port.
- » Allow Windows to install the appropriate in box drivers.
- » If upgrading from a previous Bloomberg Keyboard, restart the Bloomberg application.



KEYBOARD INSTALLATION WITH KVM SUPPORT

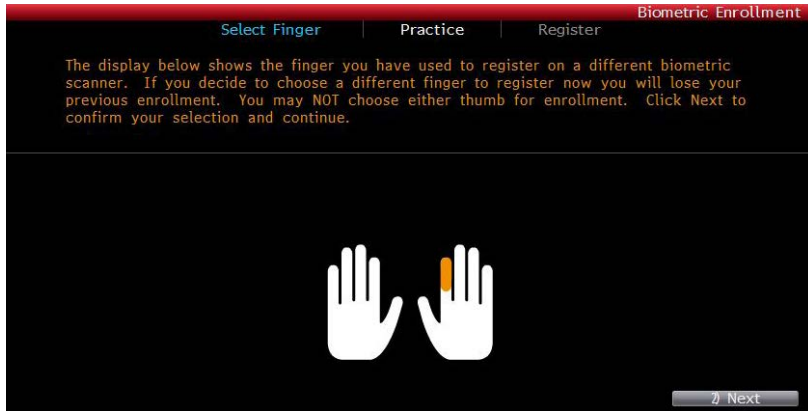
The Bloomberg Keyboard 4 is compatible with KVM switch boxes that support a standard USB Keyboard HID interface. To install with your KVM switch box please follow the process below.



- » Order or Request a Bloomberg Keyboard 4 KVM Cable (Molex 88732-8802).
- » Turn over the keyboard and remove the cable cover.
- » Unplug the rubber KVM port cover.
- » Connect the Mini-B end of the KVM Cable to the KVM Port.
- » Route the cable through the channel in the keyboard base.
- » Reinstall the cable cover and turn the keyboard over.
- » Plug the KVM Cable into the Keyboard port on the KVM Switchbox.
- » Wait for the Caps, Num and Scroll Lock LEDs to flash.
- » Plug the remaining USB cable directly into the PC that will be running the Bloomberg Professional application.
- » Allow Windows to install the appropriate in box drivers.
- » If upgrading from a previous Bloomberg Keyboard, restart the Bloomberg application.

BLOOMBERG BSAT ENROLLMENT

The Bloomberg Keyboard 4 BSAT device has been designed to be used with any finger on the right hand. If you would like to change your enrolled finger, contact Global Customer support to have your BSAT enrollment reset. At the next login, you will be prompted to go through the enrollment procedure.



On entering a username and password, the user will be prompted to enter a finger image.

To enroll using Bloomberg Secure Access Technology, take the following steps:

- » Launch the Bloomberg Professional Service.
- » Press the Enter key to bring up the login page.
- » Enter your username and password.
- » Click 'Accept' to accept the agreement.
- » Click the image of the finger you wish to enroll.



- » Follow the on screen instructions. It is advisable to practice swiping your finger, as this will assist in registration.
- » Once satisfied with your finger swiping, click next to continue.
- » To continue registration, follow the on screen instructions. After completing the registration, you will be asked to verify your finger scan.
- » One of two screens will be displayed after verification. If the registration fails, press the 'Page Down' key to repeat registration process.
- » If you have successfully registered, press the 'Enter' key to log into the Bloomberg Professional service.

KEYBOARD FEATURES



- ① Microphones
- ② BSAT – Secure login to a user’s Bloomberg account
- ③ Microphone and Speaker Volume adjustment.
Microphone LED indicates that microphone is active.
- ④ Speakers
- ⑤ BUNIT Dock – Dock for charging and updating BUNIT 3 and greater.
- ⑥ Microphone Jack
- ⑦ Headphone Jack – supports headphones and mobile headsets with integrated microphones

KEYBOARD SPECIFICATIONS

Product Dimensions – 17.8 x 6.3 x 0.9 inches (453 x 160 x 23 mm)

Product Weight – 2lbs 6oz (1.08kg)

Power Supply – DC 5V, 500mA

TIPS FOR SAFE AND EFFECTIVE USE OF YOUR BLOOMBERG KEYBOARD

- » **Keyboard** – Set up your keyboard so it is flat to your work surface. The mouse should be placed directly to the side of the keyboard to prevent having to reach unnecessarily.
- » **Chair** – Adjust the height of your chair so that your feet are planted firmly on the floor and your knees are bent at right angles.
- » **Monitor** – Position your computer screen directly in front of you (about two feet away) so that the top of the screen is at or just below your line of vision.
- » **Wrists** – Wrists should be straight when typing, keeping forearms parallel to the desk and elbows at right angles.

RETURNING THE FORMER KEYBOARD

When the new Bloomberg Keyboard 4 has been installed, take the following steps:

- » Pack the former keyboard using the same container that the new keyboard was shipped in.
- » Call the RMA Office at one of the following locations that serves your local region:
 - US +212 647 6535 (New York)
 - US +877 830 6100 (Outside New York)
 - International +44 20 7330 7313

For 24-hour support, press the HELP key twice on your Bloomberg Professional service, or you may call the Global Customer Support Desk at any of the following locations:

- » New York +1 212 318 2000
- » London +44 20 7330 7500
- » Hong Kong +852 2977 6000
- » San Francisco +1 415 912 2960
- » Frankfurt +49 69 92041 0
- » Singapore +65 6212 1000
- » Sao Paulo +55 11 3048 4500
- » Tokyo +81 3 3201 8900
- » Sydney + 61 2 9777 8600

Wrists should not be rested upon the keyboard at any time during typing; instead, rest your wrists when you are not typing. Stretching before and after typing may also help.

- » **Breaks** – Take brief breaks from typing throughout the day to give your wrists a chance to 'recharge.'

APPROVALS

This equipment has been tested and found to comply with the limits for a Class B digital device, pursuant to Part 15 of the FCC rules. These limits are designed to provide reasonable protection against harmful interference in a residential installation. This equipment generates, uses, and can radiate radio frequency energy and, if not installed and used in accordance with the instructions, may cause harmful interference to radio communications. However, there is no guarantee that interference will not occur in a particular installation. If this equipment does cause harmful interference to radio or television reception, which can be determined by turning the equipment Off and On, the user is encouraged to try to correct the interference by one or more of the following measures:

- » Re-orient or relocate the receiving antenna.
- » Increase the separation between the equipment and the receiver.
- » Connect the equipment into an outlet on a circuit different from that to which the receiver is connected.
- » Consult Bloomberg or an experienced radio/TV technician for help.

This Class B digital apparatus meets all requirements of the Canadian Interference-Causing Equipment Regulations. Cet appareil numérique de la classe B respecte toutes les exigences du Règlement sur le matériel brouilleur du Canada.



